



*Pumps For
Professionals
Only*



4" Stainless Steel Submersible Pumps

FloWise® 4" Submersible Pumps use industry proven 300 Series Stainless Steel and FDA Compliant Engineered Plastics.

You can trust that each component has been manufactured to optimize performance, reliability and durability.

APPLICATIONS

Residential Water Systems
Industrial Applications
Commercial Applications
Agricultural Applications
Irrigation Systems
Pressure Boosting

PERFORMANCE

Standard Models 5, 7, 10, 13, 18 GPM
Hi-Capacity Models 25, 35, 40, 55, 60, 80 GPM
Heads to 1,350'
1/2HP to 7 1/2HP

SUBMERSIBLE MOTORS

2 & 3 Wire, 4" NEMA Standard Motors
UL Recognized
CSA Certified





SPECIFICATIONS

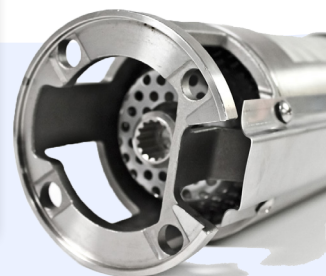
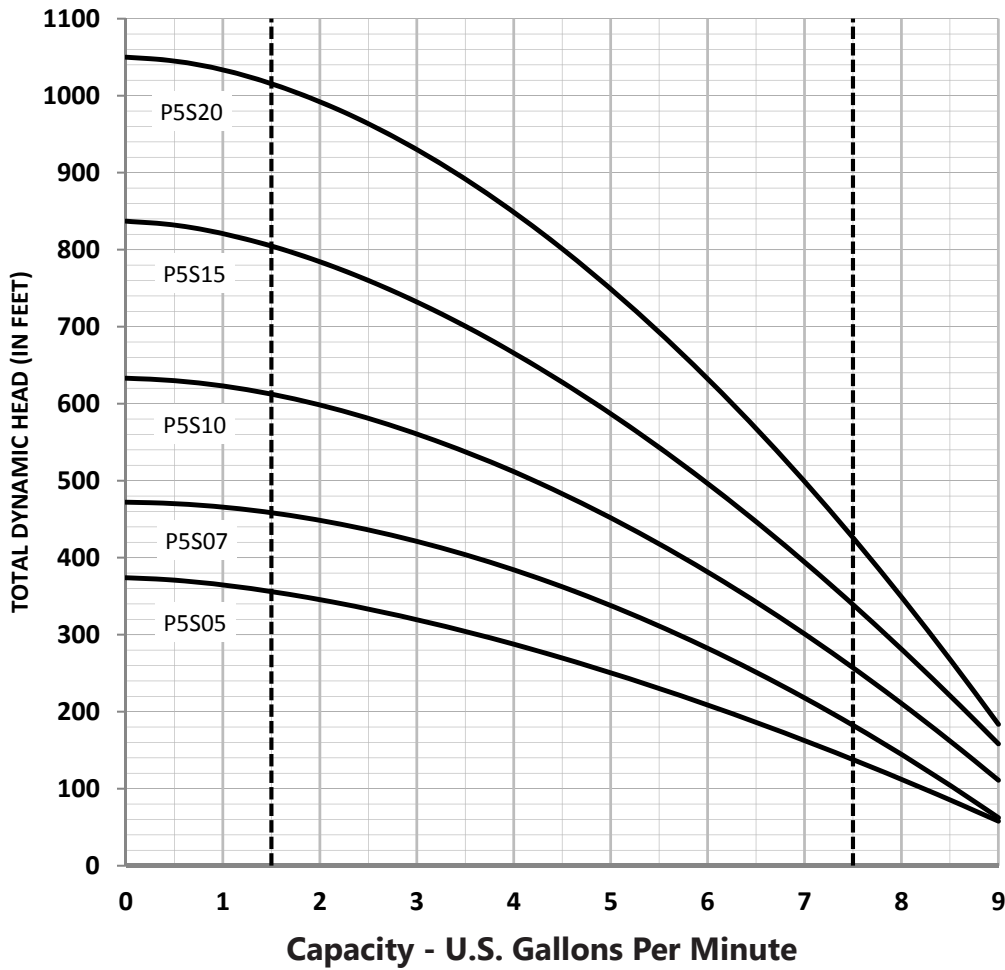
Discharge Head	304 Stainless Steel and built for strength and durability. Two convenient Stainless Steel loops for securing safety rope.
Check Valve	304 Stainless Steel built-in check valve with a Buna N rubber o-ring and Stainless Steel retaining ring.
Bearing	Made out of tough polyacetal, the bearing offers excellent strength and durability with excellent abrasion resistance.
Bowls	304 stamped Stainless Steel bowls are designed for maximum abrasion.
Impellers	Glass reinforced Noryl impellers float for superior sand handling and are FDA compliant.
Diffuser Plates	Glass reinforced polycarbonate to allow maximum wear, abrasion resistance and are FDA compliant.
Pump Shaft	304 Stainless Steel hex shaft built from solid bar stock.
Pump Shell	Heavy duty 304 polished Stainless Steel. Built for tough conditions and ensure optimum protection.
Suction Screen	304 stamped Stainless Steel, manufactured to last for the life of the pump.
Cable Guard	304 Stainless Steel designed to protect motor leads for damage in the well.
Shaft Coupling	304 Stainless Steel provides a solid alignment to the motor shaft.
Motor Bracket	304 Stainless Steel and built for strength and durability. Motor bracket is NEMA 4" standard to accept your choice of submersible motor.
NSF Approval	For peace of mind, pumps are NSF/ANSI 372 approved.



5GPM

Discharge Size: 1-1/4" NPT

Best Performance Range 1.5 to 7.5 GPM



Pump End	GPM	HP	Stages	Discharge	Pump End Weight
P5S05	5	1/2	12	1 1/4" NPT	8
P5S07		3/4	15		9
P5S10		1	20		11
P5S15		1.5	26		13
P5S20		2	33		15

5GPM

Discharge Size: 1-1/4" NPT

Pump Model	PSI	Depth to Water Level in Feet - Capacity in U.S. Gallons Per Minute																				SHUT OFF													
		20	40	60	80	100	120	140	160	180	200	220	240	260	280	300	340	380	420	460	500	540	580	620	660	700	740	780	820	860	900	940	FEET		
P5S05	0						8	7	7	6	6	6	5	5	4	3																			374
	20				7	7	7	6	6	5	5	4	4	3	2																				PSI
	30			7	7	7	6	6	5	5	4	4	3	2																					162
1/2	40		7	7	7	6	6	5	5	4	4	3	2																					FEET	
	50	8	7	7	6	6	5	5	4	4	3	2																						472	
	60	7	7	6	6	6	5	5	4	3	3																							PSI	
P5S07	0										7	7	7	7	6	6	5	4	3															204	
	20						7	7	7	6	6	6	5	5	5	4	3																	FEET	
	30						7	7	7	6	6	6	5	5	5	4	2																	633	
HP	40					7	7	7	6	6	6	5	5	5	4	3																		PSI	
	50				7	7	7	6	6	6	5	5	4	4	3																			274	
	60			7	7	7	6	6	6	5	5	4	3	3																				FEET	
P5S10	0															7	7	6	6	5	5	4	3	2									837		
	20											7	7	7	7	6	6	5	4	4	3													PSI	
	30											7	7	7	7	6	5	5	4	3	2													362	
HP	40									7	7	7	7	7	6	6	5	5	4	3	2													FEET	
	50									7	7	7	7	7	6	6	5	5	4	3	2													1050	
	60										7	7	7	7	7	6	6	5	4	3	2													PSI	
1	0																																	455	
	20																7	7	7	6	6	6	5	5	5	4	4	3	3	2			FEET		
	30																7	7	7	6	6	6	5	5	5	4	4	3	3	2			1050		
P5S15	40																7	7	7	6	6	6	5	5	5	4	4	3	2				PSI		
	50										7	7	7	7	7	6	6	5	5	5	4	3	2											362	
	60										7	7	7	7	7	6	6	5	5	4	3	2												FEET	
P5S20	0																	7	7	7	6	6	6	5	5	5	4	4	3	3	3	1050			
	20																	7	7	7	6	6	6	5	5	5	4	4	3	3	2		PSI		
	30																	7	7	7	6	6	6	5	5	5	4	4	3	3	2		455		
HP	40																	7	7	7	6	6	6	5	5	5	4	4	3	3	2		FEET		
	50																	7	7	7	6	6	6	5	5	5	4	4	3	3	2		1050		
	60																	7	7	7	6	6	6	5	5	5	4	4	3	3	2		PSI		
2	0																																	455	
	20																																	FEET	
	30																																	1050	
HP	40																																	PSI	
	50																																	455	
	60																																	FEET	

Pump Capacity is in U.S. Gallons Per Minute

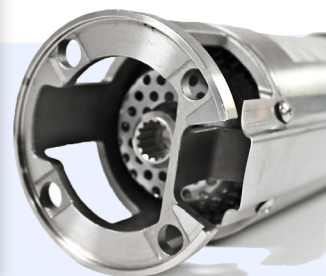
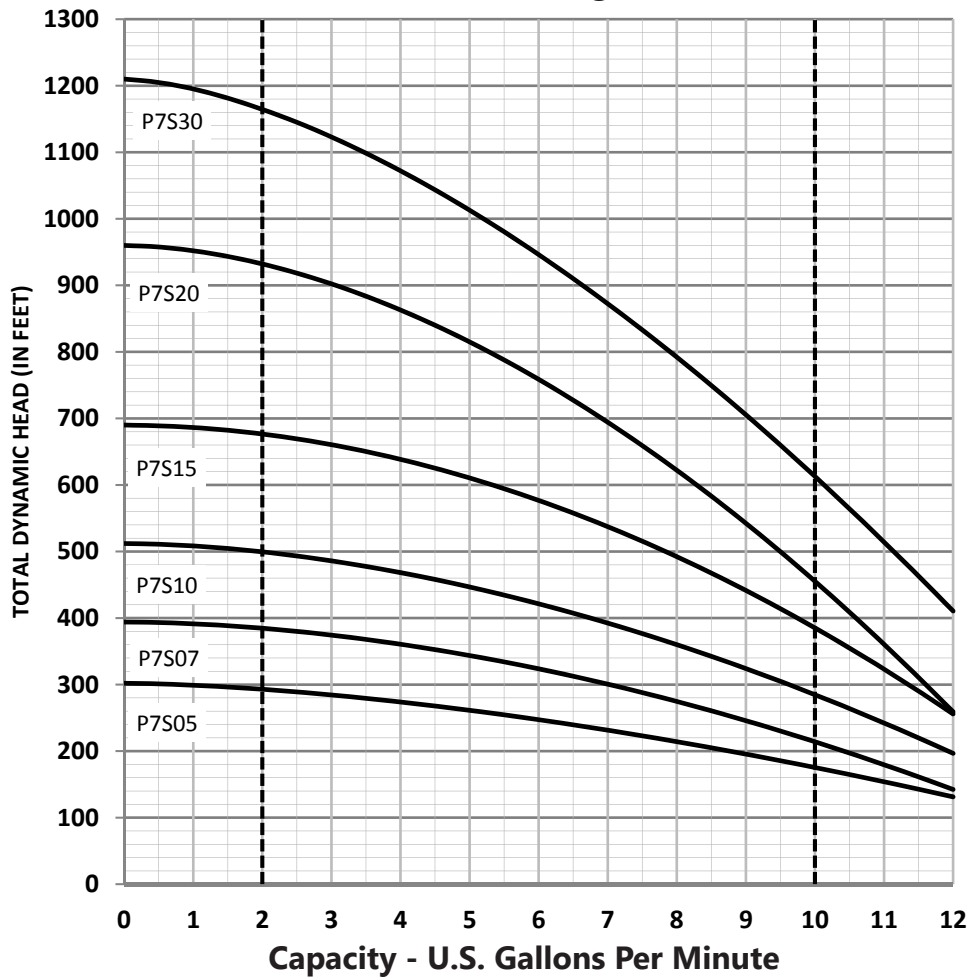
READING THE MODEL NUMBER

P	10	S	05
Pump	GPM 5,7 10,13 18,25	Stainless	05=1/2HP 07=3/4HP 10=1HP 15=1.5HP 20=2HP
PUMP			

7GPM

Discharge Size: 1-1/4" NPT

Best Performance Range 2 to 10 GPM

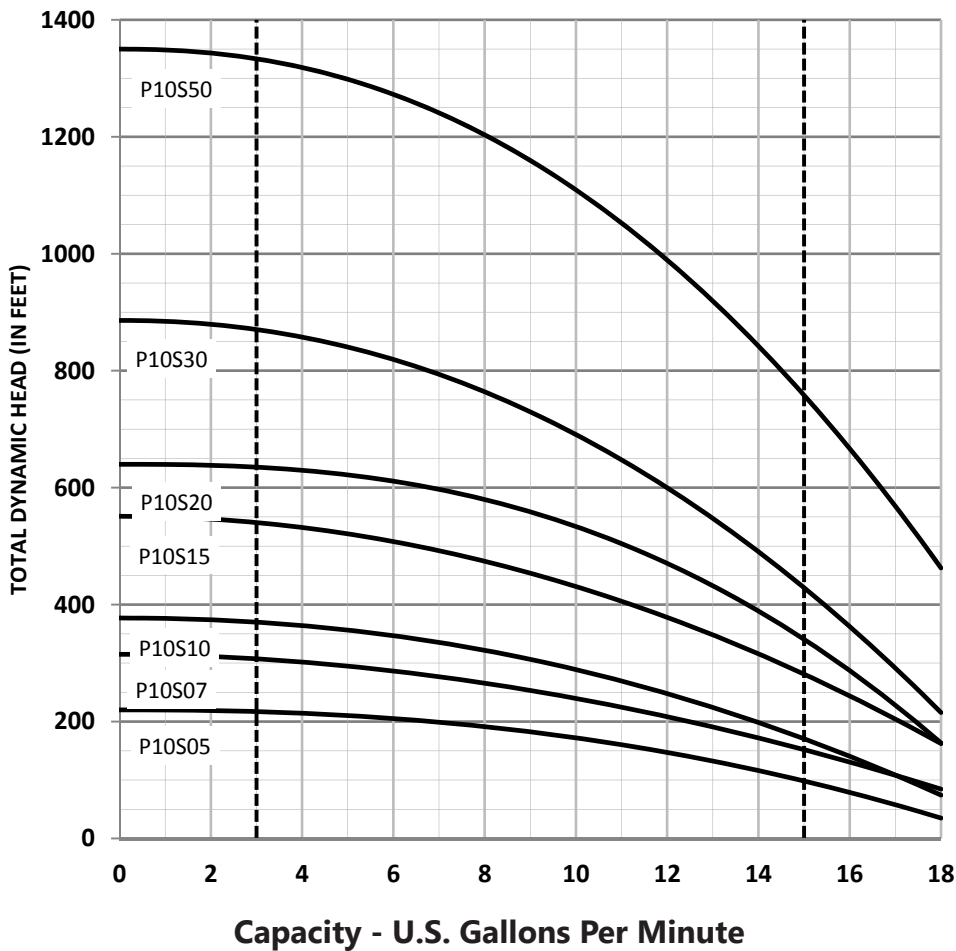


Pump End	GPM	HP	Stages	Discharge	Pump End Weight
P7S05	7	1/2	10	1 1/4" NPT	7
P7S07		3/4	13		8
P7S10		1	17		10
P7S15		1.5	22		12
P7S20		2	27		13
P7S30		3	34		18

10GPM

Discharge Size: 1-1/4" NPT

Best Performance Range 3 to 15 GPM



Pump End Only	GPM	HP	Stages	Discharge Size	Weight
P10S05	10	1/2	7	1 1/4" NPT	7
P10S07		3/4	10		8
P10S10		1	12		9
P10S15		1.5	17		12
P10S20		2	20		13
P10S30		3	27		18
P10S50		5	42		24

10GPM

Discharge Size: 1-1/4" NPT

Pump Model	PSI	Depth to Water Level in Feet - Capacity in U.S. Gallons Per Minute																										SHUT OFF			
		20	40	60	80	100	120	140	160	180	200	220	240	260	280	300	340	380	420	460	500	540	580	620	660	700	740		780	820	
P10S05	0				16	15	14	13	11	9	6																		FEET		
	20		16	15	14	12	11	8	5																				220		
	30	15	14	13	12	10	8	4																							
HP 1/2	40	14	13	12	10	7	3																						PSI		
	50	13	11	10	7																								95		
	60	11	9	6																											
P10S07	0					16	15	14	13	12	11	10																	FEET		
	20				16	15	14	13	12	11	10	8	6																315		
	30			15	15	14	13	12	11	10	8	5																			
HP 3/4	40		15	14	14	13	12	11	10	8	5																		PSI		
	50	15	14	13	12	11	10	9	7	5																			136		
	60	14	13	12	11	10	9	7	4																						
P10S10	0							16	15	14	13	13	12	11	10	7													FEET		
	20					15	15	14	13	13	12	10	9	8	6														377		
	30				16	15	15	14	13	12	11	10	9	8	5																
HP 1	40			16	15	14	14	13	12	11	10	9	7	5															PSI		
	50			15	14	14	13	12	11	10	9	7	4																163		
	60	16	15	14	13	13	12	11	10	8	7	4																			
P10S15	0											15	15	15	14	13	12	11	9	7	3								FEET		
	20									16	15	15	14	14	13	13	12	10	9	6	0								551		
	30								16	15	15	14	14	13	13	12	11	10	7	4											
HP 1-1/2	40							16	15	15	14	14	13	13	12	12	10	9	6										PSI		
	50					15	15	15	14	14	13	13	12	12	11	9	7	3											239		
	60				15	15	15	14	14	13	13	12	11	11	10	8	6														
P10S20	0													16	15	15	14	13	12	11	10	8	6						FEET		
	20													16	15	15	15	14	13	12	11	10	8	5					640		
	30												16	15	15	14	14	13	13	12	10	9	6								
HP 2	40											16	15	15	14	14	14	13	12	11	9	8	4						PSI		
	50								16	15	15	15	14	14	14	13	12	11	10	8	6								277		
	60							16	15	15	15	14	14	14	13	13	12	11	9	7											
P10S30	0																	16	15	14	14	13	12	12	11	10	9	7	6	FEET	
	20																	15	15	14	14	13	12	12	11	10	9	7	5	886	
	30															16	15	15	14	13	13	12	12	11	10	9	8	6	4		
HP 3	40															16	15	15	14	14	13	12	11	11	10	8	7	5		PSI	
	50															16	16	15	15	14	14	13	13	12	11	10	9	8	6	3	384
	60														16	16	15	15	15	14	13	13	12	11	10	9	8	7	4		

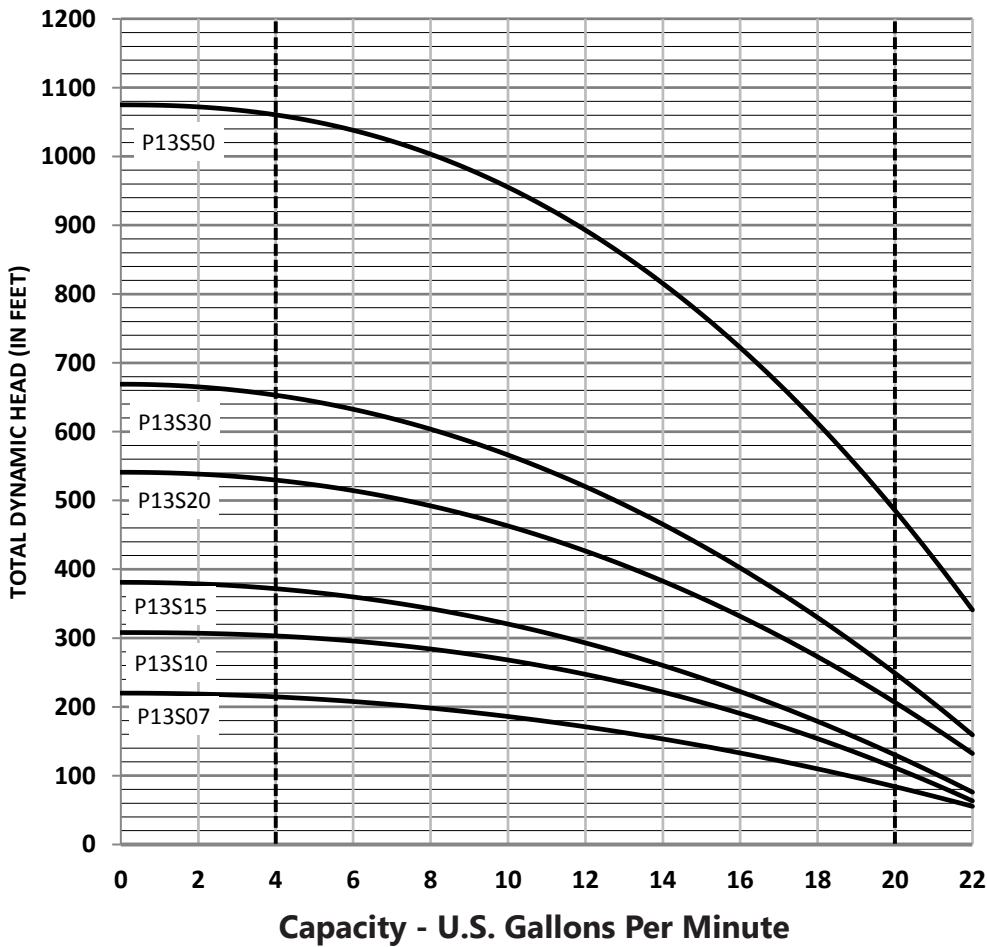
Pump Model	PSI	Depth to Water Level in Feet - Capacity in U.S. Gallons Per Minute																										SHUT OFF	
		400	440	480	520	560	600	640	680	720	760	800	840	880	920	960	1000	1040	1080	1120	1160	1200	1240	1280	1320	1360	1400		
P10S50	0							16	15	15	15	14	14	13	13	12	12	11	11	10	9	8	7	5					FEET
	20							16	15	15	15	14	14	13	13	12	12	11	11	10	9	8	7	4					1350
	30							15	15	15	14	14	13	13	12	12	11	11	10	10	9	7	6	3					
HP 5	40							16	15	15	14	14	14	13	13	12	12	11	10	10	9	8	7	4					PSI
	50							15	15	15	14	14	13	13	12	12	11	11	10	10	8	7	6						584
	60					15	15	15	14	14	13	13	13	12	12	11	10	10	9	8	6	3							

Pump Capacity is in U.S. Gallons Per Minute

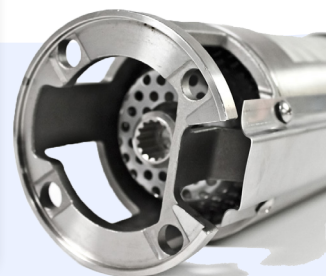
13GPM

Discharge Size: 1-1/4" NPT

Best Performance Range 4 to 20 GPM



Pump End	GPM	HP	Stages	Discharge	Pump End Weight
P13207	13	3/4	7	1 1/4" NPT	7
P13S10		1	10		8
P13S15		1.5	12		9
P13S20		2	17		12
P13S30		3	21		15
P13S50		5	35		19



13GPM

Discharge Size: 1-1/4" NPT

Pump Model	PSI	Depth to Water Level in Feet - Capacity in U.S. Gallons Per Minute																									Shut Off				
		20	40	60	80	100	120	140	160	180	200	220	240	260	280	300	340	380	420	460	500	540	580	620	660	700		740	780	820	
P13S07	0				19	18	17	15	13	11	8																				FEET
	20		19	18	16	15	13	10	6																					220	
	30	19	17	16	14	12	10	5																							
HP 3/4	40	17	16	14	12	10	4																							PSI	
	50	15	14	12	9																									95	
	60	13	11	8																											
P13S10	0					19	18	17	16	15	14	13	11	9	6															FEET	
	20			20	19	18	17	16	15	14	12	11	8	4																308	
	30		20	19	18	17	16	14	13	12	10	7																			
HP 1	40	20	19	18	17	15	14	13	12	10	7																			PSI	
	50	19	18	17	15	14	13	11	10	7																				133	
	60	17	16	15	14	13	11	9	6																						
P13S15	0						19	19	18	17	16	15	14	13	12	9														FEET	
	20					19	18	18	17	16	15	14	13	12	10	9														381	
	30			20	19	18	17	16	15	14	12	11	10	8	4																
HP 1-1/2	40	20	19	18	17	16	15	14	13	12	11	9	7	4																PSI	
	50	20	19	18	17	16	15	14	13	12	11	9	6																	165	
	60	19	18	17	16	15	14	13	12	11	9	6																			
P13S20	0									20	19	19	18	18	17	16	14	12	10	8										FEET	
	20							20	19	19	18	17	17	16	15	14	12	10	7											541	
	30							19	19	18	18	17	17	16	15	15	13	11	9												
HP 2	40							19	19	18	18	17	16	16	15	14	14	12	10	6											PSI
	50				20	19	19	18	18	17	16	16	15	14	13	13	11	8												234	
	60			20	19	19	18	18	17	16	16	15	14	13	12	11	9	5													
P13S30	0											20	19	19	18	17	16	14	13	12	10	7								FEET	
	20											19	19	19	18	18	17	16	14	13	12	10	7								669
	30									20	19	19	19	18	18	17	16	15	14	12	10	8	4								
HP 3	40									20	19	19	18	18	17	17	15	14	13	11	9	6									PSI
	50									20	19	19	18	18	17	17	16	15	13	12	10	8									290
	60							20	19	19	18	18	17	17	16	16	15	14	13	11	9	5									

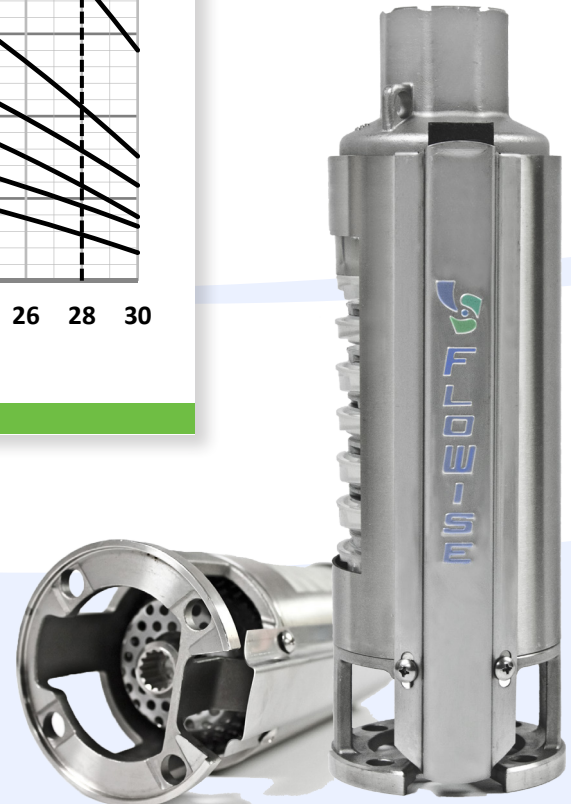
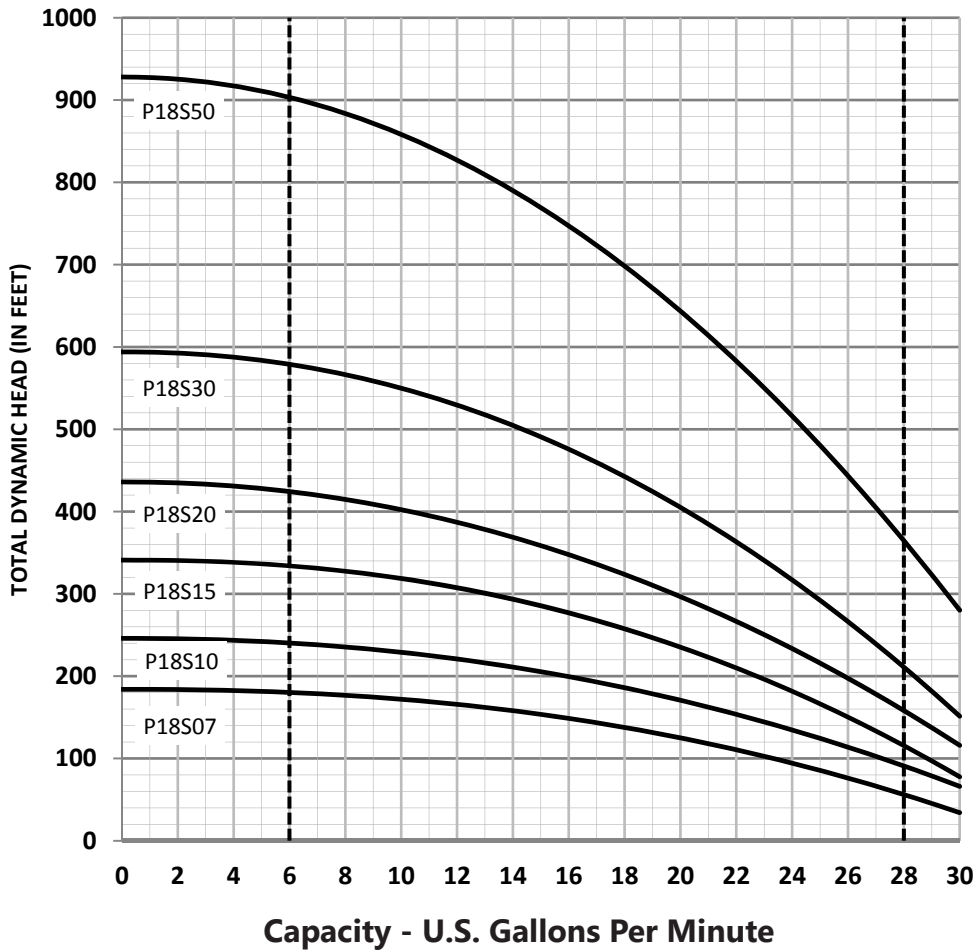
Pump Model	PSI	Depth to Water Level in Feet - Capacity in U.S. Gallons Per Minute															Shut Off														
		300	350	400	450	500	550	600	650	700	750	800	850	900	950	1000		1050													
P13S50	0										19	19	18	17	16	15	14	13	12	10	8	6								FEET	
	20										20	19	19	18	17	16	15	14	13	12	10	8	6								1075
	30										20	19	18	18	17	16	15	14	13	12	10	8									
HP 5	40									20	20	19	18	17	16	15	15	13	12	11	8									PSI	
	50									20	20	19	18	18	17	16	15	14	13	12	10									465	
	60									20	20	19	18	17	16	15	15	13	12	11											

Pump Capacity is in U.S. Gallons Per Minute

18GPM

Discharge Size: 1-1/4" NPT

Best Performance Range 6 to 28 GPM

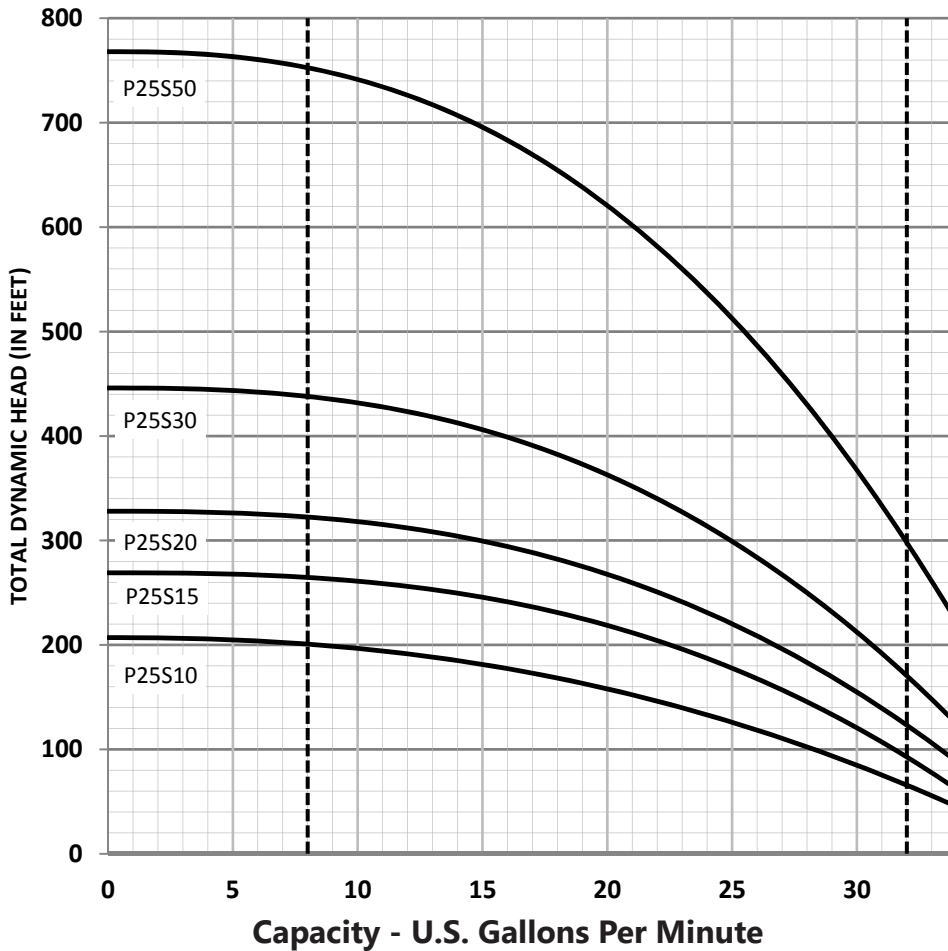


Pump End Only	GPM	HP	Stages	Discharge Size	Weight
P18S07	18	3/4	6	1 1/4" NPT	7
P18S10		1	8		8
P18S15		1.5	11		10
P18S20		2	14		11
P18S30		3	19		15
P18S50		5	30		21

25GPM

Discharge Size: 1-1/4" NPT

Best Performance Range 8 to 32 GPM



Pump End Only	GPM	HP	Stages	Discharge Size	Weight
P25S10	25	1	7	1 1/4" NPT	8
P25S15		1.5	9		9
P25S20		2	11		10
P25S30		3	15		14
P25S50		5	26		21

25GPM

Discharge Size: 1-1/4" NPT

Pump Model	PSI	Depth to Water Level in Feet - Capacity in U.S. Gallons Per Minute																								SHUT OFF		
		20	40	60	80	100	120	140	160	180	200	220	240	260	280	300	340	380	420	460	500	540	580	620	660		700	740
P25S10	0			32	30	28	26	23	20	16	11																	FEET
	20	31	30	27	25	22	19	15	8																			207
	30	29	27	25	21	18	14																					PSI
1 HP	40	27	25	21	18	14																						90
	50	24	21	17	13																							
	60	20	16	11																								
P25S15	0				33	31	30	28	26	24	22	20	16	11														FEET
	20		32	31	29	28	26	23	21	18	15	8																269
	30	32	31	29	27	25	23	21	18	14																		PSI
1-1/2 HP	40	30	29	27	25	23	20	17	13																			116
	50	29	27	25	23	20	17	13																				
	60	26	24	22	20	16	11																					
P25S20	0					33	31	30	29	27	25	22	21	19	15													FEET
	20				32	31	30	28	26	25	23	21	18	14	9													328
	30			32	31	29	28	26	24	22	20	18	14	8														PSI
2 HP	40			30	29	28	26	24	22	20	18	13	8															142
	50		30	29	28	26	24	22	20	17	13																	
	60	30	29	27	25	22	21	19	15	12																		
P25S30	0							33	32	31	30	29	28	27	25	22	19	14										FEET
	20					32	32	31	30	29	27	26	25	23	22	20	12											446
	30				32	31	30	30	28	27	26	25	23	21	20	15	8											PSI
3 HP	40			32	31	30	29	28	27	26	24	23	21	20	18	12												193
	50			32	31	30	29	28	27	26	24	23	21	19	17	11												
	60	33	32	31	30	29	28	27	25	24	22	21	19	17	14	10												
P25S50	0													33	32	31	30	29	27	26	24	22	20	18	16	12		FEET
	20												32	32	31	31	30	28	27	25	24	22	20	18	15	11		768
	30											32	32	31	31	30	29	27	26	24	23	21	19	16	13	8		PSI
5 HP	40										32	32	31	31	30	29	28	27	25	23	22	20	17	14	10			332
	50									32	32	31	31	30	29	29	27	26	24	22	21	18	16	13				
	60						33	32	32	31	30	30	29	29	28	26	25	23	21	19	17	14	9					

Pump Capacity is in U.S. Gallons Per Minute

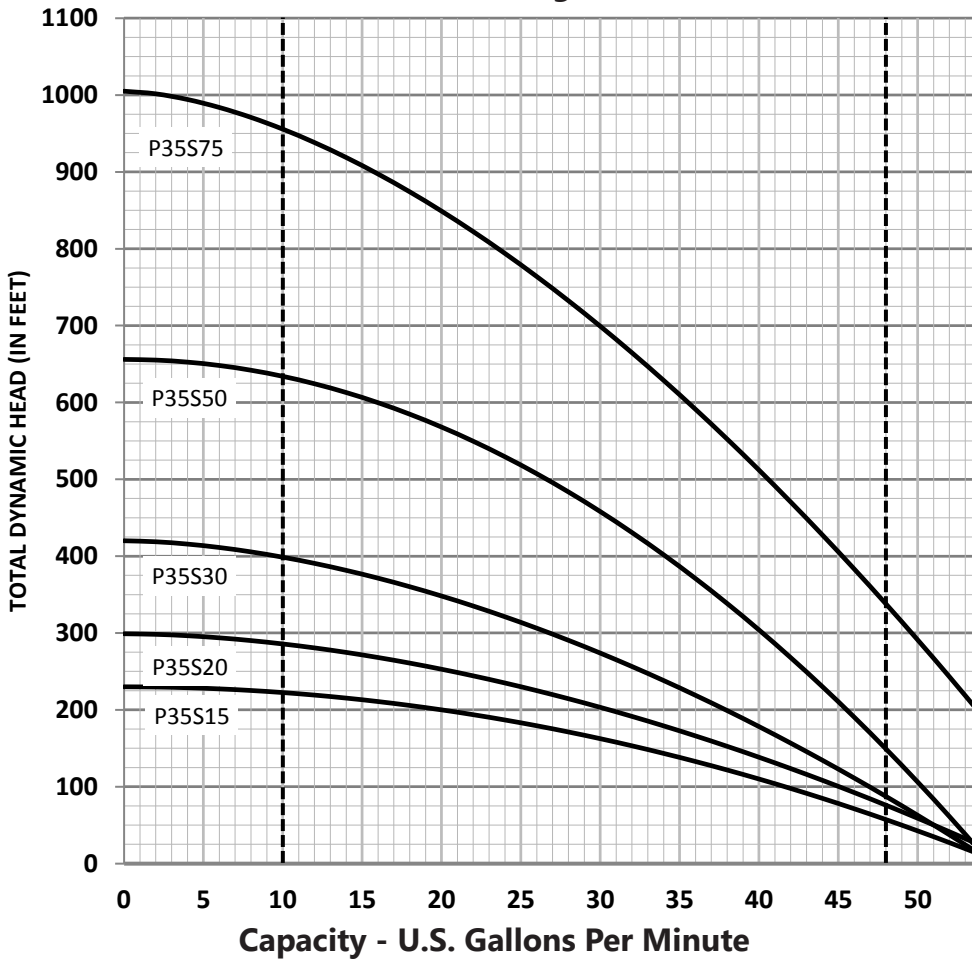
READING THE MODEL NUMBER

P	25	S	10
Pump	GPM	Stainless	10=1HP
	10,13		15=1.5HP
	18,25		20 = 2HP
	35,40		30 = 3HP
	55,60		50 = 5HP
	80		75 = 7.5HP
PUMP			

35GPM

Discharge Size: 2" NPT

Best Performance Range 10 to 48 GPM



Pump End Only	GPM	HP	Stages	Discharge Size	Weight
P35S15	13	1.5	8	2" NPT	9
P35S20		2	10		10
P35S30		3	14		13
P35S50		5	22		19
P35S75		7.5	43		27

35GPM

Discharge Size: 2" NPT

Pump Model	PSI	Depth to Water Level in Feet - Capacity in U.S. Gallons Per Minute																												SHUT OFF
		20	40	60	80	100	120	140	160	180	200	220	240	260	280	300	320	340	360	380	400	420	440	460	480	520	560	600		
P35S15	0		49	47	45	42	39	36	32	26	19																		FEET	
	20	47	44	42	38	34	31	24	17																				230	
	30	44	41	38	34	30	23	15																						
HP	40	41	37	33	29	22	14																						PSI	
	50	37	33	28	21	12																							100	
1-1/2	60	33	27	20	11																									
	0			48	47	45	43	40	37	34	32	28	22																FEET	
	20	48	46	44	42	39	37	33	31	26	21	14																	299	
HP	30	46	44	41	39	36	33	30	25	20	13																		PSI	
	40	43	41	39	36	33	29	24	19	11																			129	
2	50	41	38	35	33	29	24	18																					100	
	60	38	35	32	28	23	16																						FEET	
	0				48	47	45	44	42	40	39	37	34	33	31	28	24	20	15										420	
P35S30	20	49	48	46	45	43	42	40	38	36	34	32	30	27	23	19	13												PSI	
	30	48	46	45	43	41	40	38	36	33	32	29	26	22	18	12													182	
HP	40	46	44	43	41	39	37	35	33	32	29	25	22	17	11														PSI	
	50	44	43	41	39	37	35	33	31	28	25	21	16																182	
3	60	42	41	39	37	35	33	31	28	24	20	15																	FEET	
	0					49	48	47	46	45	44	43	43	42	41	39	39	38	37	36	34	32	30	29	27	25	24	22	FEET	
	20	0	49	48	47	47	46	45	44	44	43	42	42	41	40	37	37	36	35	35	32	29	27	25	23	21	12		656	
HP	30	49	48	47	46	46	45	44	44	43	42	42	41	40	39	36	36	35	34	34	30	28	26	25	23	16			PSI	
	40	48	47	46	45	45	44	44	43	42	40	40	39	38	37	35	35	34	33	33	27	24	22	19	16	11			284	
5	50	47	46	45	44	44	43	43	42	41	39	39	38	37	36	33	33	32	32	31	25	20	19						PSI	
	60	46	45	44	43	43	42	42	41	40	38	38	37	36	35	32	31	30	30	29	22	18	15							

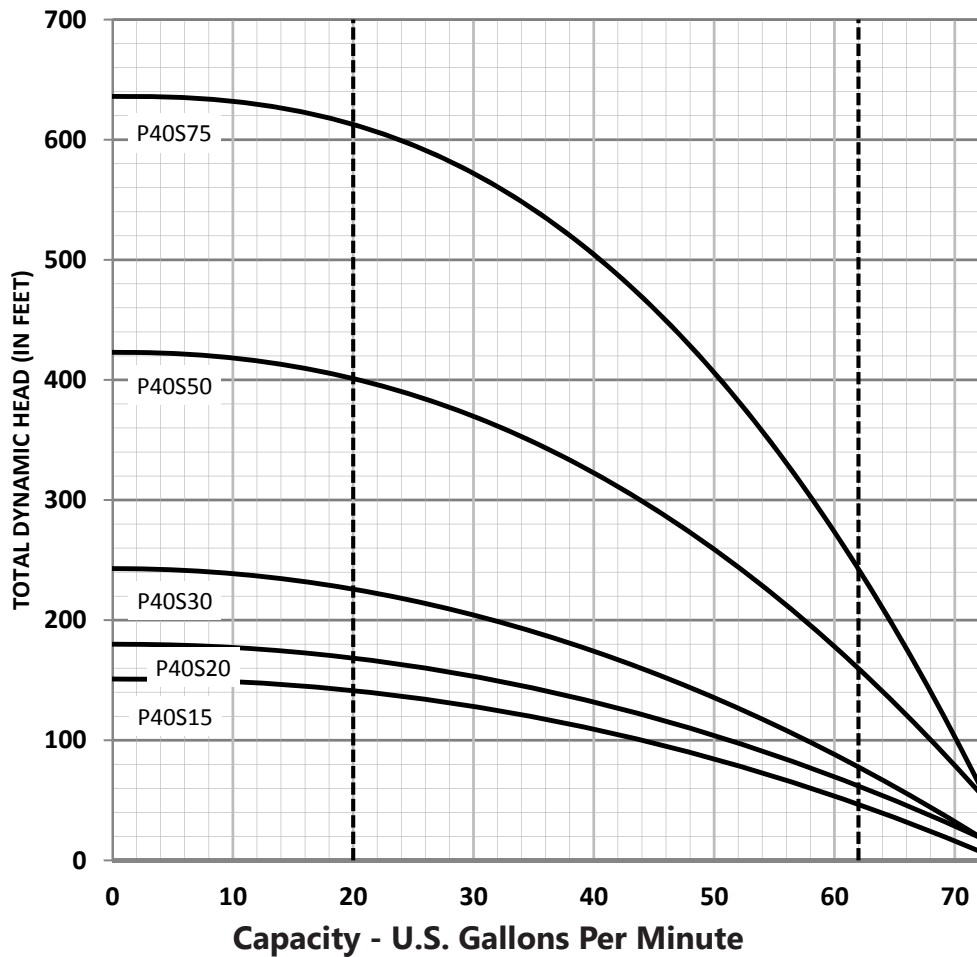
Pump Model	PSI	Depth to Water Level in Feet - Capacity in U.S. Gallons Per Minute																												SHUT OFF
		50	100	150	200	250	300	350	400	450	500	550	600	650	700	750	800	850	900	950	1000	1050	1100	1150	1200	1250	1300	1350		
P35S75	0					47	46	45	43	41	39	37	35	33	31	27	23	19	14										FEET	
	20				49	48	46	45	43	41	41	37	35	33	31	28	24	19	14										1005	
	30		49	48	47	45	44	42	41	39	36	34	32	29	26	22	17	12												
HP	40		49	48	46	45	43	42	40	38	35	33	31	28	24	20	15												PSI	
	50		48	47	46	44	42	41	39	37	34	33	30	26	22	17	12												435	
7.5	60	49	48	46	45	43	42	40	38	36	33	31	28	24	20	15														

Pump Capacity is in U.S. Gallons Per Minute

40GPM

Discharge Size: 2" NPT

Best Performance Range 20 to 62 GPM



Pump End Only	GPM	HP	Stages	Discharge Size	Weight
P40S15	40	1.5	5	2" NPT	8
P40S20		2	6		8
P40S30		3	8		9
P40S50		5	14		13
P40S75		7.5	21		18

40GPM

Discharge Size: 2" NPT

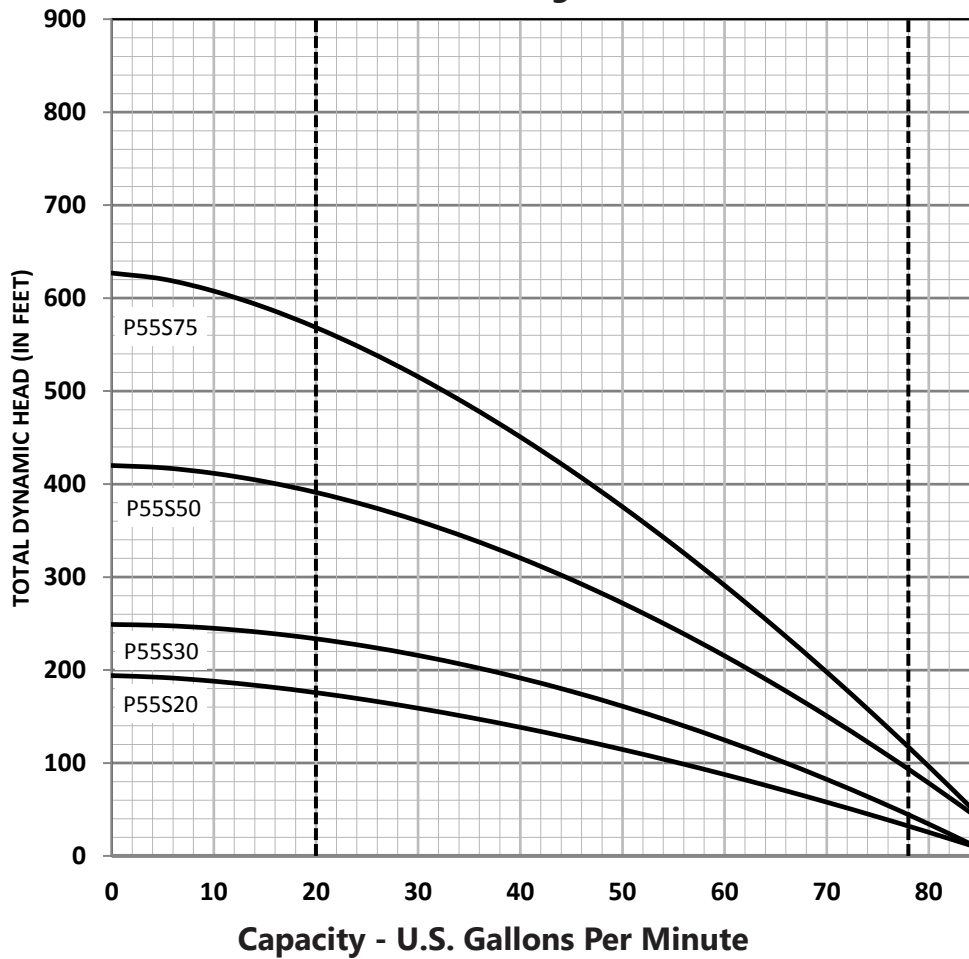
Pump Model	PSI	Depth to Water Level in Feet - Capacity in U.S. Gallons Per Minute																									SHUT OFF	
		20	40	60	80	100	120	140	160	180	200	220	240	260	280	300	320	340	360	380	400	440	480	520	560			
P40S15	0		64	58	52	45	34																			FEET		
	20	57	50	42	31																					151		
	30	49	40	28																								
HP 1-1/2	40	39	25																							PSI		
	50	22																								65		
P40S20	60																											
	0			62	57	52	46	37	25																	FEET		
	20	60	56	50	43	34																				180		
HP 2	30	55	49	42	33																					PSI		
	40	48	41	31																						78		
P40S30	50	39	29																									
	60	26																										
	0				62	58	55	50	46	40	33	20														FEET		
HP 3	20	64	61	57	53	49	44	37	32	30																243		
	30	60	57	53	48	43	36	28																				
P40S50	40	56	52	47	42	35	26																			PSI		
	50	51	47	41	34	24																				105		
	60	46	40	33	21																							
HP 5	0						64	63	61	59	57	55	52	50	47	44	41	37	33	26						FEET		
	20				64	62	60	58	56	54	51	49	46	43	40	35	31	23								423		
	30				63	62	60	58	56	53	51	49	46	43	39	35	30	21										
P40S75	40		63	61	59	57	55	53	51	48	45	42	38	34	29	20										PSI		
	50	63	61	59	57	55	53	50	48	45	42	38	33	28												183		
	60	61	59	57	55	52	50	47	44	41	37	33	26															
HP 7-1/2	0										64	63	62	61	60	59	58	56	55	53	52	48	43	37	30	FEET		
	20										64	63	62	61	60	58	57	56	54	53	51	49	47	42	36	28		
	30										64	63	62	61	60	58	57	56	54	52	51	49	47	44	39	32	22	636
HP 7-1/2	40										64	63	62	61	59	58	57	55	54	52	50	48	46	44	41	35	27	PSI
	50						64	63	61	60	59	58	57	55	54	52	50	49	46	44	41	38	31	20			275	
	60						64	63	62	61	60	59	58	56	55	53	52	50	48	46	43	40	37	34	25			

Pump Capacity is in U.S. Gallons Per Minute

55GPM

Discharge Size: 2" NPT

Best Performance Range 20 to 78 GPM



Pump End Only	GPM	HP	Stages	Discharge Size	Weight
P55S20	55	2	7	2" NPT	12
P55S30		3	9		15
P55S50		5	15		22
P55S75		7.5	22		32

55GPM

Discharge Size: 2" NPT

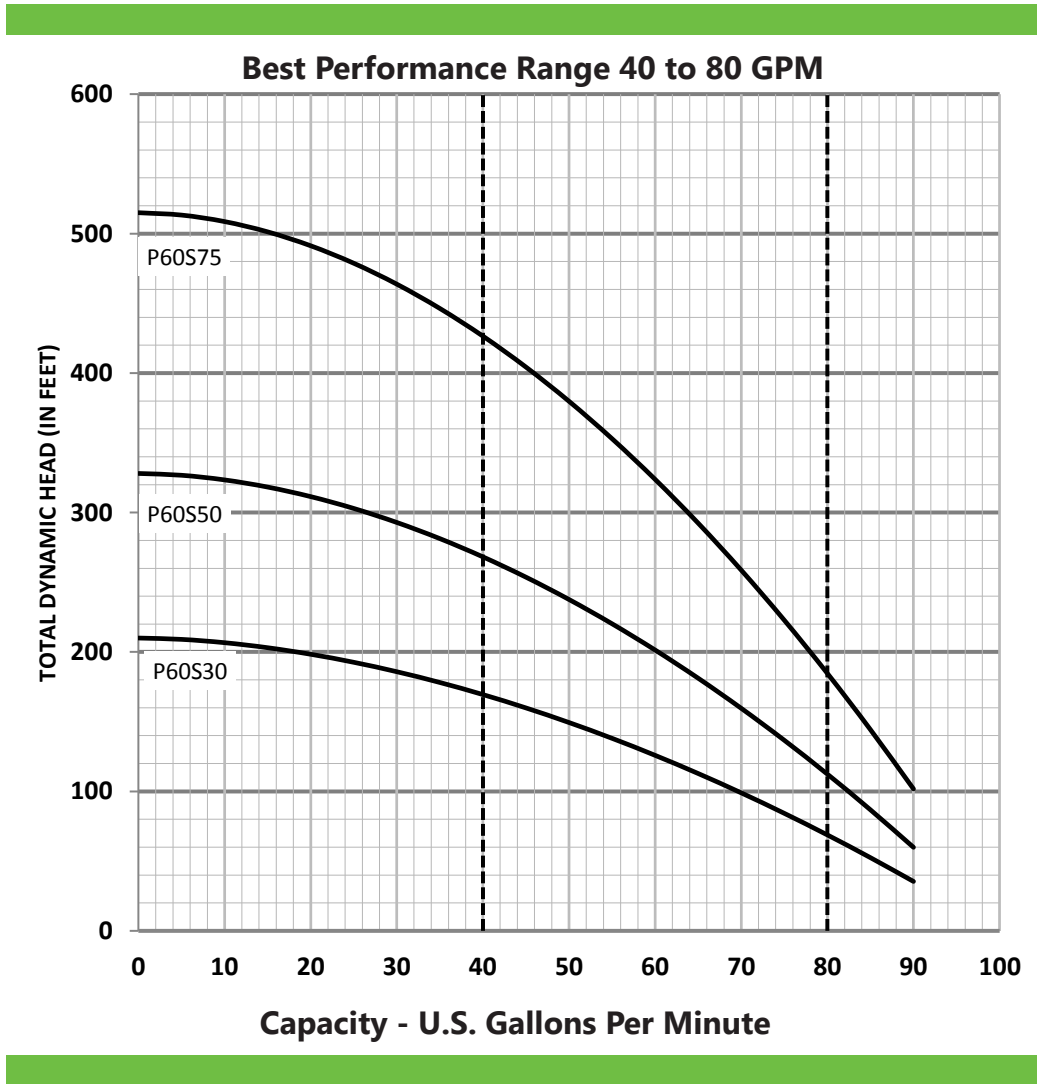
Pump Model	PSI	Depth to Water Level in Feet - Capacity in U.S. Gallons Per Minute																		SHUT OFF	
		20	40	60	80	100	120	140	160	180	200	220	240	260	280	300	320	340	360		380
P55S20	0		75	70	64	57	49	40	28												FEET
	20	68	62	55	47	36	24														194
	30	61	54	45	34	21															
HP	40	53	44	33																	PSI
	50	42	32																		84
	60	29																			
P55S30	0		79	75	71	67	62	57	51	43	34										FEET
	20	74	70	66	61	55	48	41	32												249
	30	69	65	60	54	47	39	30													
HP	40	64	59	53	46	38	28														PSI
	50	58	52	45	36	26															108
	60	51	44	35	25																
P55S50	0				79	77	75	72	70	67	64	61	57	54	49	45	39	33	27		FEET
	20		79	76	74	72	69	66	63	60	56	52	48	43	38	32	25				420
	30	78	76	74	71	69	66	63	59	56	52	47	42	37	31	24					
HP	40	76	73	71	68	65	62	59	55	51	46	41	36	30	23						PSI
	50	73	70	68	65	62	58	54	50	46	41	35	29	22							182
	60	70	67	64	61	58	54	50	45	40	34	28	20								

Pump Model	PSI	Depth to Water in Feet-Ratings are in Gallons Per Minute																	SHUT OFF		
		20	60	100	140	180	220	260	300	340	380	420	460	500	540	580	620	660		700	740
P55S75	0			78	75	72	69	65	61	57	51	45	38	31	22						FEET
	20		77	75	72	68	65	60	56	51	44	37	30	20							627
	30	79	76	73	70	66	62	58	53	47	40	33	24								
HP	40	77	74	71	68	64	60	55	50	43	36	28									PSI
	50	75	72	69	66	62	57	52	46	39	32	23									271
	60	74	71	67	63	59	54	49	42	35	27										

Pump Capacity is in U.S. Gallons Per Minute

60GPM

Discharge Size: 2" NPT



Pump End Only	GPM	HP	Stages	Discharge Size	Weight
P60S30	60	3	7	2" NPT	10
P60S50		5	11		14
P60S75		7.5	17		19

60GPM

Discharge Size: 2" NPT

Pump Model	PSI	Depth to Water Level in Feet - Capacity in U.S. Gallons Per Minute																				SHUT OFF		
		20	40	60	80	100	120	140	160	180	200	220	240	260	280	300	320	340	360	380	400		420	440
P60S30	0				76	69	61	53	44															FEET
	20		73	66	58	50	41																	210
	30	72	65	57	49	39																		
HP 3	40	64	56	47																				PSI
	50	55	46																					91
	60	44																						
P60S50	0							74	69	64	59	54	48	42										FEET
	20					72	68	63	58	52	46	40												328
	30				72	67	62	57	51	46	39													
HP 5	40		75	71	66	61	56	51	45	38														PSI
	50	75	70	65	61	55	50	44	37															142
	60	69	65	60	54	49	43																	
P60S75	0											77	74	71	68	65	61	58	54	50	46	41		FEET
	20								79	76	73	70	67	64	60	57	53	49	45	40				515
	30								79	76	73	70	67	63	60	56	52	48	44	39				
HP 7-1/2	40					78	75	72	69	66	62	59	55	51	47	42								PSI
	50					78	75	72	69	66	62	59	55	51	47	42								223
	60				77	75	72	68	65	62	58	54	50	46	42									

Pump Capacity is in U.S. Gallons Per Minute

— READING THE MODEL NUMBER —

P	25	S	10
Pump	GPM	Stainless	10=1HP
	10,13		15=1.5HP
	18,25		20 = 2HP
	35,40		30 = 3HP
	55,60		50 = 5HP
	80		75 = 7.5HP
PUMP			

80GPM

Discharge Size: 2" NPT



Pump End Only	GPM	HP	Stages	Discharge Size	Weight
P80S30	80	3	5	2" NPT	10
P80S50		5	9		13
P80S75		7.5	14		24

80GPM

Discharge Size: 2" NPT

Pump Model	PSI	Depth to Water Level in Feet - Capacity in U.S. Gallons Per Minute																		SHUT OFF		
		20	40	60	80	100	120	140	160	180	200	220	240	260	280	300	320	340	360		380	400
P80S30	0		112	99	81	62																FEET
	20	93	76	56																		144
	30	73	52																			
HP	40	49																				PSI
3	50																					62
	60																					
P80S50	0				113	104	97	88	78	67	54											FEET
	20	118	110	102	94	85	74	63	50													269
	30	109	100	93	83	73	61															
HP	40	99	91	82	71	59																PSI
5	50	90	80	69	57																	116
	60	78	68	55																		
P80S75	0					116	111	105	99	94	88	81	74	67	59							FEET
	20			120	115	109	103	99	92	86	79	72	65									413
	30		119	114	108	103	98	91	85	78	71	64										
HP	40	118	113	107	102	97	90	84	77	70	62											PSI
7-1/2	50	112	107	101	96	89	83	76	69	61												179
	60	106	100	95	88	82	75	68	60													

Pump Capacity is in U.S. Gallons Per Minute

READING THE MODEL NUMBER

P	25	S	10
Pump	GPM	Stainless	10=1HP
	10,13		15=1.5HP
	18,25		20 = 2HP
	35,40		30 = 3HP
	55,60		50 = 5HP
	80		75 = 7.5HP
PUMP			

Pump End Only	GPM	HP	Stages	Discharge Size	Weight	Length
P5S05	5	1/2	12	1-1/4" NPT	8	15"
P5S07		3/4	15		9	17"
P5S10		1	20		11	20-1/2"
P5S15		1.5	26		13	26-1/8"
P5S20		2	33		15	30-3/4"
P7S05	7	1/2	10	1-1/4" NPT	7	13-3/4"
P7S07		3/4	13		8	15-7/8"
P7S10		1	17		10	18-3/4"
P7S15		1.5	22		12	22-1/4"
P7S20		2	27		13	27-1/2"
P7S30		3	34		18	32-1/4"
P10S05	10	1/2	7	1-1/4" NPT	7	11-1/2"
P10S07		3/4	10		8	13-1/2"
P10S10		1	12		9	15"
P10S15		1.5	17		12	18-1/2"
P10S20		2	20		13	20-1/2"
P10S30		3	27		18	27"
P10S50		5	42		24	37"
P13S07	13	3/4	7	1-1/4" NPT	7	11-1/2"
P13S10		1	10		8	13-1/2"
P13S15		1.5	12		9	15-1/4"
P13S20		2	17		12	18-1/2"
P13S30		3	21		15	21-1/2"
P13S50		5	35		19	32-1/2"
P18S07	18	3/4	6	1-1/4" NPT	7	11-7/8"
P18S10		1	8		8	13-3/8"
P18S15		1.5	11		10	16"
P18S20		2	14		11	18-1/2"
P18S30		3	19		15	23"
P18S50		5	30		21	33-1/2"

Pump End Only	GPM	HP	Stages	Discharge Size	Weight	Length
P25S10	25	1	7	1-1/4" NPT	8	13-3/8"
P25S15		1.5	9		9	15-3/8"
P25S20		2	11		10	17-1/4"
P25S30		3	15		14	21-1/4"
P25S50		5	26		21	33 1/2"
P35S15	35	1.5	8	2" NPT	9	17 1/2"
P35S20		2	10		10	20"
P35S30		3	14		13	24-3/4"
P35S50		5	22		19	36"
P35S75		7.5	22		27	52-3/4"
P40S15	40	1.5	5	2" NPT	8	13-3/4"
P40S20		2	6		8	15"
P40S30		3	8		9	17-1/2"
P40S50		5	14		13	24-3/4"
P40S75		7.5	21		18	34-3/4"
P55S20	55	2	7	2" NPT	12	22"
P55S30		3	9		15	26-1/4"
P55S50		5	15		22	38-1/2"
P55S75		7.5	43		32	53-7/8"
P60S30	60	3	7	2" NPT	10	22"
P60S50		5	11		14	30"
P60S75		7.5	17		19	44"
P80S30	80	3	5	2" NPT	10	19-1/2"
P80S50		5	9		13	30-1/4"
P80S75		7.5	14		24	43-1/2"

Motor cable selection chart (Max. Cable Length In Feet - Starter to Motor)

Single Phase, 60 Hz, 75° C

Volts	HP	AWG Copper Wire Size												MCM Copper Wire Size					
		14	12	10	8	6	4	3	2	1	0	00	000	0000	250	300	350	400	500
115V	1/2	100	160	250	390	620	960	1190	1460	1780	2160	2630	3140	3770	4240	4770	5320	5750	6590
	1/3	550	880	1390	2190	3400	5250	6520	7960	9690	11770	14320	17050	20460	22980	25850	28750	31070	35580
230V	1/2	400	650	1020	1610	2510	3880	4810	5880	7170	8720	10620	12660	15210	17100	19260	21440	23200	26600
	3/4	300	480	760	1200	1870	2890	3580	4370	5330	6470	7870	9380	11250	12640	14220	15810	17090	19570
	1	250	400	630	990	1540	2380	2960	3610	4410	5360	6520	7780	9350	10510	11840	13180	14260	16350
	1 1/2	190	310	480	770	1200	1870	2320	2850	3500	4280	5240	6300	7620	8630	9810	10980	11960	13860
	2	150	250	390	620	970	1530	1910	2360	2930	3620	4480	5470	6700	770	8890	10080	11130	13170
	3	120*	190	300	470	750	1190	1490	1850	2320	2890	3610	4470	5550	6450	7580	8690	9740	11770
	5	-	110*	180	280	450	710	890	1110	1390	1740	2170	2680	3330	3870	4550	5210	5840	7060
	7 1/2	-	-	120*	200	310	490	610	750	930	1140	1410	1720	2100	2400	2790	3120	3430	4040
	10	-	-	-	160*	250	390	490	600	750	930	1160	1430	1760	2030	2370	2700	3000	3590
	15	-	-	-	-	170*	270*	340	430	530	660	820	1020	1260	1460	1700	1940	2170	2610

Three Phase, 60 Hz, 75° C

Volts	HP	AWG Copper Wire Size												MCM Copper Wire Size					
		14	12	10	8	6	4	3	2	1	0	00	000	0000	250	300	350	400	500
230V	1/2	930	1490	2350	3700	5760	8910	-	-	-	-	-	-	-	-	-	-	-	-
	3/4	670	1080	1700	2580	4190	6490	8060	9860	-	-	-	-	-	-	-	-	-	-
	1	560	910	1430	2260	3520	5460	6780	8290	-	-	-	-	-	-	-	-	-	-
	1 1/2	420	670	1060	1670	2610	4050	5030	6160	7530	9170	-	-	-	-	-	-	-	-
	2	320	510	810	1280	2010	3130	3890	4770	5860	7170	8780	-	-	-	-	-	-	-
	3	240	390	620	990	1540	2400	2980	3660	4480	5470	6690	8020	9680	-	-	-	-	-
	5	140*	230	370	590	920	1430	1790	2190	2690	3290	4030	4850	5870	6650	7560	8460	9220	-
	7 1/2	-	160*	260	420	650	1020	1270	1560	1920	2340	2870	3440	4160	4710	5340	5970	6500	7510
	10	-	-	190*	310	490	760	950	1170	1440	1760	2160	2610	3160	3590	4100	4600	5020	5840
	15	-	-	-	210*	330	520	650	800	980	1200	1470	1780	2150	2440	2780	3110	3400	3940
	20	-	-	-	-	250*	400	500	610	760	930	1140	1380	1680	1910	2180	2450	2680	3120
25	-	-	-	-	-	320*	400	500	610	750	920	1120	1360	1540	1760	1980	2160	2520	
30	-	-	-	-	-	260*	330*	410*	510	620	760	930	1130	1280	1470	1650	1800	2110	
460V	1/2	3770	6020	9460	-	-	-	-	-	-	-	-	-	-	-	-	-	-	-
	3/4	2730	4350	6850	-	-	-	-	-	-	-	-	-	-	-	-	-	-	-
	1	2300	3670	5770	9070	-	-	-	-	-	-	-	-	-	-	-	-	-	-
	1 1/2	1700	2710	4270	6730	-	-	-	-	-	-	-	-	-	-	-	-	-	-
	2	1300	2070	3270	5150	8050	-	-	-	-	-	-	-	-	-	-	-	-	-
	3	1000	1600	2520	3970	6200	-	-	-	-	-	-	-	-	-	-	-	-	-
	5	590	950	1500	2360	3700	5750	-	-	-	-	-	-	-	-	-	-	-	-
	7 1/2	420	680	1070	1690	2640	4100	5100	6260	7680	-	-	-	-	-	-	-	-	-
	10	310	500	790	1250	1960	3050	3800	4680	5750	7050	-	-	-	-	-	-	-	-
	15	-	340*	540	850	1340	2090	2600	3200	3930	4810	5900	7110	-	-	-	-	-	-
	20	-	-	410	650	1030	1610	2000	2470	3040	3730	4580	5530	-	-	-	-	-	-
	25	-	-	330*	530	830	1300	1620	1990	2450	3010	3700	4470	5430	-	-	-	-	-
	30	-	-	270*	430	680	1070	1330	1640	2030	2490	3060	3700	4500	5130	5860	-	-	-
	40	-	-	-	320*	500*	790	980	1210	1490	1830	2250	2710	3290	3730	4250	-	-	-
	50	-	-	-	-	410*	640	800	980	1210	1480	1810	2190	2650	3010	3420	3830	4180	4850
	60	-	-	-	-	-	540*	670*	830	1020	1250	1540	1850	2240	2540	2890	3240	3540	4100
	75	-	-	-	-	-	440*	550*	680*	840	1030	1260	1520	1850	2100	2400	2700	2950	3440
100	-	-	-	-	-	-	-	500*	620*	760*	940	1130	1380	1560	1790	2010	2190	2550	
125	-	-	-	-	-	-	-	-	-	600*	740*	890*	1000	1220	1390	1560	1700	1960	
150	-	-	-	-	-	-	-	-	-	-	630*	760*	920*	1050	1190	1340	1460	1690	
175	-	-	-	-	-	-	-	-	-	-	-	670*	810*	930*	1060	1190	1300	1510	
200	-	-	-	-	-	-	-	-	-	-	-	-	590*	710*	810*	920*	1030	1130	
250	-	-	-	-	-	-	-	-	-	-	-	-	-	-	-	-	760	865	

1. If aluminum conductor is used, multiply lengths by 0.5. Maximum allowable length of aluminum is considerably shorter than copper wire of same size.
2. The portion of the total cable which is between the service entrance and a 3ø motor starter should not exceed 25% of the total maximum length to assure reliable starter operation. Single-phase control boxes may be connected at any point of the total cable length.
3. Asterisks and bolded items indicate the use of single strand only in free air or water per NEC



www.FlowiseWater.com

PO Box 1815 | Fort Worth, TX | 76101
sales@flowisewater.com



FWCC416

Exclusively Distributed By Preferred Pump & Equipment, LP
www.PreferredPump.com