

SPREADMASTER SPREADER PARTS & USER MANUAL



SMW SALES LLC
11432 TRUSSUM POND ROAD
LAUREL, DE 19956
PHONE: (302) 875-7958
WEB: <https://smwsales.com>

Family Owned & Operated for over 50 years

TABLE OF CONTENTS

	PAGE
Table of Contents.....	1
Warranty of Spreader.....	2
Basic Operation of Spreader.....	3
Maintenance of Spreader.....	4-5
24" Hydraulic Spinner Assembly.....	6
24" Mechanical Spinner Assembly.....	7
28" Mechanical Spinner Assembly.....	8
Spinner Gearboxes.....	9-10
Main Conveyor Gearbox.....	11
Walking Beam Axle Assembly 20,000 LB.....	12
Axle Hub Wheel Assembly 8 Lug 10,000 LB.....	13
Axle Hub Wheel Assembly 6 Lug 6,500 LB.....	14
Hydraulic Basic Parts Illustration.....	15
Hydraulic Basic Parts List.....	16-17
All Mechanical Parts Illustration.....	18
All Mechanical Basic Parts List.....	19-20
Parts Not In Illustrations.....	21-22



SPREAD MASTER

WARRANTY OF SPREADMASTER SPREADER UNITS

All Units manufactured by SMW Sales, LLC are warranted for one year from date of delivery to customer. This includes all components and workmanship. Any deviation from this will be reviewed on a per unit basis. All warranty claims must be approved in writing by SMW Sales, LLC, prior to any work being done on the unit. All warranty repairs must be reported and approved (in writing) by Richard C. Carmine. All claims MUST include serial number of the unit in question.



BASIC OPERATION OF MECHANICAL & HYDRAULIC PULL- TYPE SPREADERS

1. Raise metering gate to desired opening.
2. On Spreaders equipped with optional Hydraulic spinners engage hydraulic lever on tractor to start spinners and check for proper spinner rotation. If spinners are rotating in the wrong direction switch hoses to correct the problem. Spinner should run 500 to 600 RPM.
3. On Spreaders equipped with standard mechanical spinners engage PTO control and bring tractor RPM up to proper PTO speed.
4. Release clutch slowly.
CAUTION: Never “pop” clutch – always release slowly.
5. When stopping tractor abruptly- always engage clutch first.

CAUTION: Never spread materials that your unit was not designed to spread. Doing so can cause great damage to unit. If the type of material you wish to spread is questionable, call dealer or factory.

CAUTION: Never allow material to stay in unit long enough to become frozen in extremely cold weather. Doing so can cause serious damage to unit.

EXTENDED LIFE OF YOUR SPREADER THROUGH PROPER MAINTENANCE

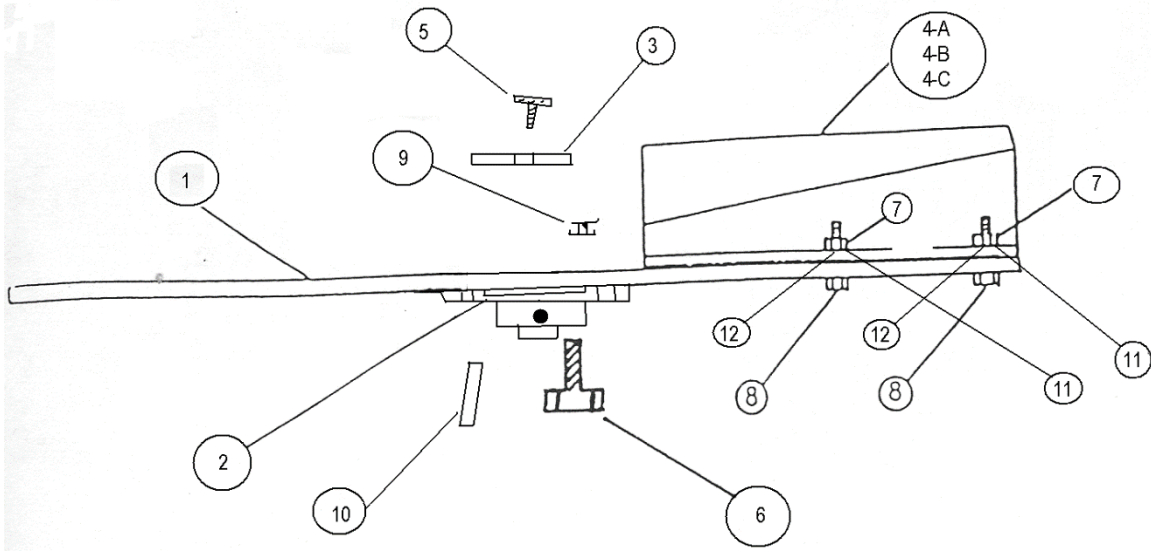
We are pleased you selected our equipment. We feel, as we are sure you do, with the high cost of repairs and parts that proper maintenance of equipment is well worth seeing to. This unit is a major investment and must be maintained properly for years of excellent service. Listed below are some areas that require periodic attention.

1. Your spreader has a chain conveyor that has been pre-adjusted to the proper tension and test run at the factory. Main conveyor spring-loaded tightening should be adjusted until springs are collapsed to 1/16" clearance between spring coils. This is very important as a loose conveyor chain may wrap around rear drive sprockets and cause great damage to chain and drive mechanism.
2. Grease bearings and U-Joints daily when unit is in use.
3. Maintain proper lubricant level in gear case. At the first sign of an oil seal leak, replace immediately. To maintain warranty status use main conveyor worm gear box oil Omala Oil 320 or equivalent. Check gearbox oil daily.
4. Spreader body should be washed down occasionally and especially when not to be used for an extended period, with 4-parts fuel oil and 1-part 10 W motor oil.
5. Slide tube in telescoping front PTO shaft must be greased at least once a week.
6. Main drive belt must be checked for proper tension and alignment daily.

EXTENDED LIFE OF YOUR SPREADER THROUGH
PROPER MAINTENANCE-CONTINUED

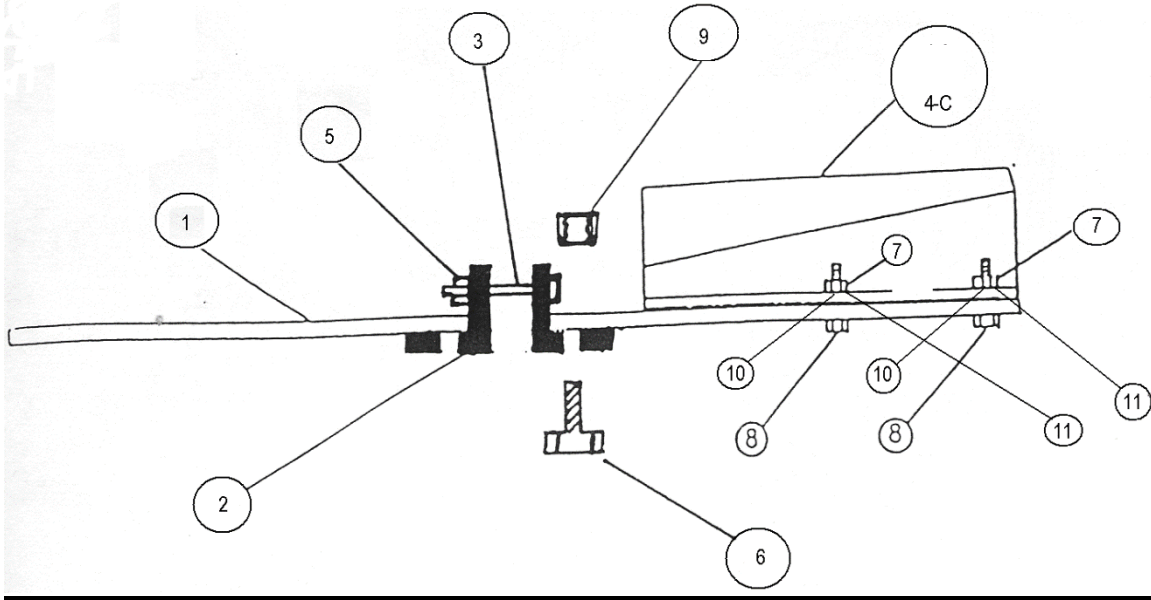
7. Depending on the type of material being spread, loosening of spinner vane bolts may be experienced. As a precaution - spinner vane bolts and spinner hub bolts should be checked daily.
8. To avoid serious injury no one should ride in spreader or be within spreading distance of rear spinners when spreader is in use. Do not remove guards as they are installed for your safety.
9. For operation in extremely cold temperatures, operate tractor with spinners engaged with no load for approximately 10 minutes to warm hydraulic oil. (This applies only to spreaders equipped with optional hydraulic spinners.)
10. Tire air pressure should be maintained at 35 PSI.
11. Wheel lugs should be checked for tightness after the first four hours of operation and periodically thereafter.
12. In wet manure conditions it may become necessary to periodically clean out packed manure from under rear shaft and sprocket assembly.

24" HYDRAULIC SPINNER ASSEMBLY



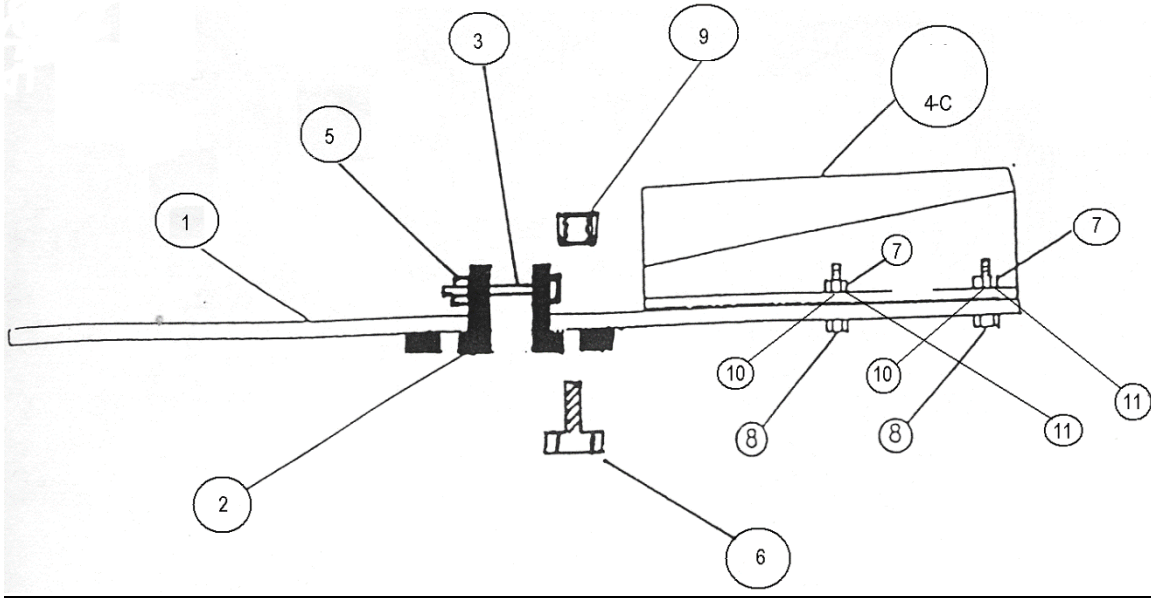
<u>NO.</u>	<u>DESCRIPTION</u>	<u>QUANTITY</u>	<u>PART #</u>
1	Spinner Plate, 24"	1 each	<u>SM0139</u>
2	Hub, Hydraulic	1 each	<u>SM0143</u>
3	Washer, Hub	1 each	<u>SM0143W</u>
4-C	Universal Spinner Vane	4 each	<u>SM0348</u>
5	Bolt, 1/4" x 1" Fine	1 each	<u>SM0259</u>
6	Bolt, 5/16" x 1-1/4" Coarse	6 each	<u>SM0172</u>
7	Hex Nut, 1/4"	12 each	<u>SM0350</u>
8	Bolt, 1/4" x 1-1/4" Coarse	12 each	<u>SM0228</u>
9	Lock Nut, 5/16" Coarse	6 each	<u>SM0353</u>
10	Key, 1/4" x 1"	1 each	<u>SM0260</u>
11	Flat Washer, 1/4"	12 each	<u>SM0351</u>
12	Lock Washer, 1/4"	12 each	<u>SM0352</u>

24" MECHANICAL SPINNER ASSEMBLY



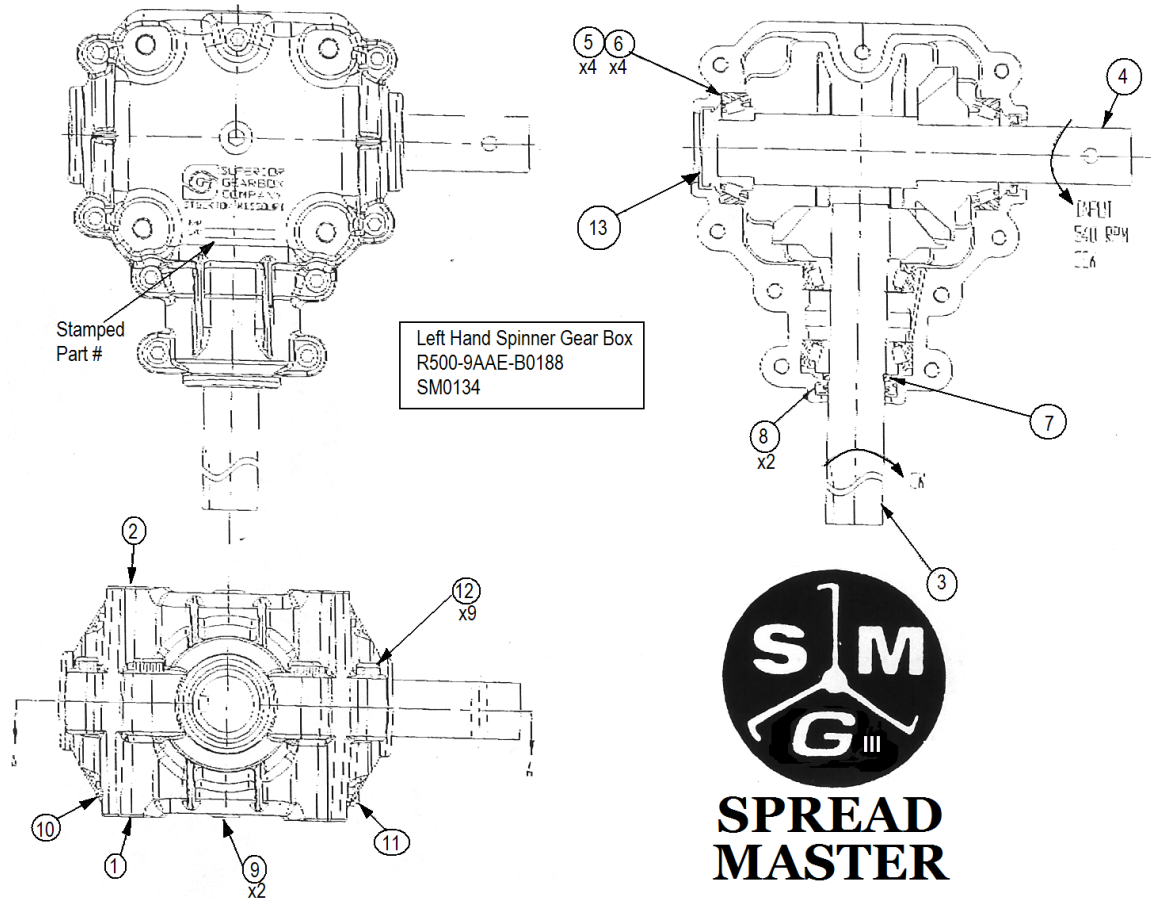
<u>NO.</u>	<u>DESCRIPTION</u>	<u>QUANTITY</u>	<u>PART #</u>
1	Spinner Plate, 24"	1 each	<u>SM0139</u>
2	Hub, Mechanical	1 each	<u>SM0065</u>
3	Bolt, 3/8" x 2-3/4" (GR.8) Coarse	1 each	<u>SM0206</u>
4-C	9-1/2" Spinner Vane	4 each	<u>SM0348</u>
5	Lock Nut, 3/8" Coarse	1 each	<u>SM0166</u>
6	Bolt, 5/16" x 1-1/4" Coarse	6 each	<u>SM0172</u>
7	Hex Nut, 5/16" Coarse	12 each	<u>SM0350</u>
8	Bolt, 5/16" x 1-1/4" Coarse	12 each	<u>SM0228</u>
9	Lock Nut, 5/16" Coarse	6 each	<u>SM0353</u>
10	Flat Washer, 5/16"	12 each	<u>SM0351</u>
11	Lock Washer, 5/16"	12 each	<u>SM0352</u>

28" MECHANICAL SPINNER ASSEMBLY



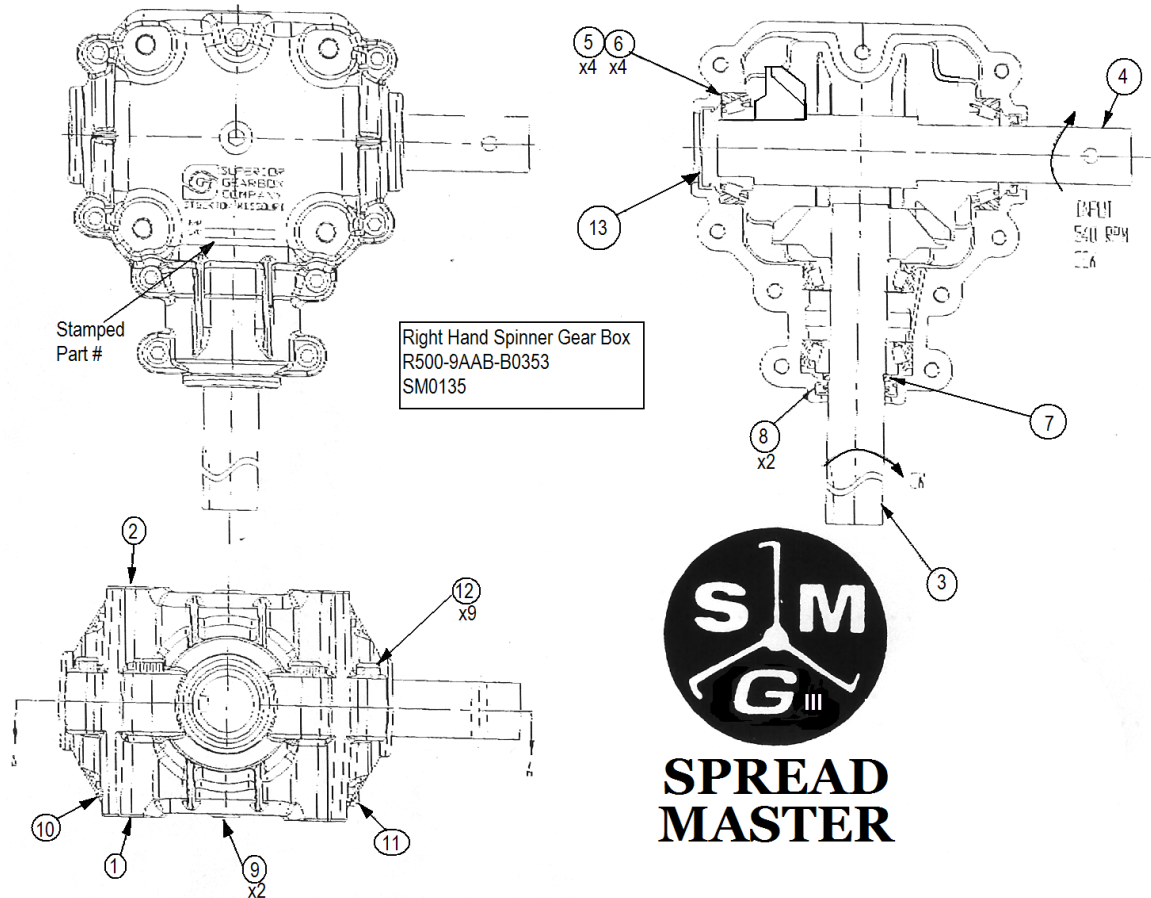
<u>NO.</u>	<u>DESCRIPTION</u>	<u>QUANTITY</u>	<u>PART #</u>
1	Spinner Plate, 28"	1 each	<u>SM0139L</u>
2	Mechanical, Hub	1 each	<u>SM0065</u>
3	Bolt, 3/8" x 2-3/4" (GR.8) Coarse	1 each	<u>SM0206</u>
4-C	10-1/2" Spinner Vane	6 each	<u>SM0348L</u>
5	Lock Nut, 3/8" Coarse	1 each	<u>SM0166</u>
6	Bolt, 5/16" x 1-1/4" Coarse	6 each	<u>SM0172</u>
7	Hex Nut, 3/8" Coarse	18 each	<u>SM0403</u>
8	Bolt, 3/8" x 1-1/4" Coarse	18 each	<u>SM0168</u>
9	Lock Nut, 5/16" Coarse	6 each	<u>SM0353</u>
10	Flat Washer, 3/8"	18 each	<u>SM0167</u>
11	Lock Washer, 3/8"	18 each	<u>SM0402</u>

Left Hand Spinner Gear Box



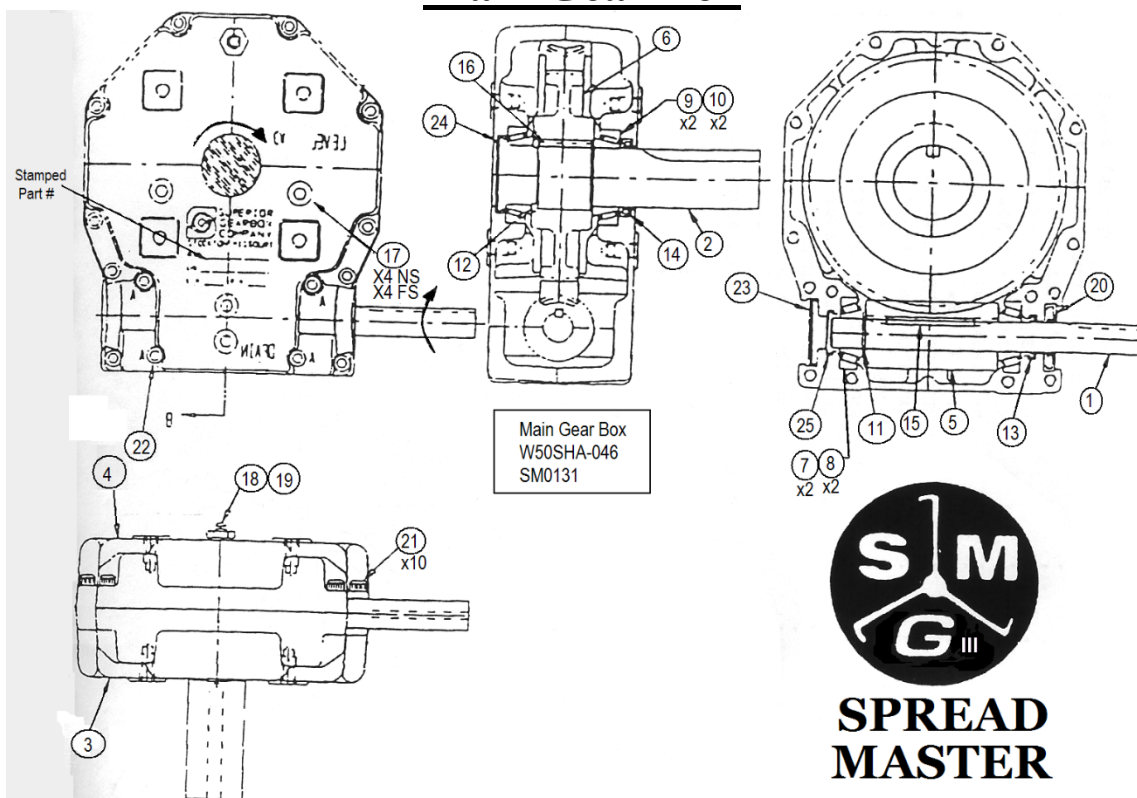
- 1 – SM0368 (Housing – Mach Tap 1/8 1/4)
- 2 – SM0369 (Housing – Mach Thru-STD)
- 3 – SM0364 (Input Shaft Assembly)
- 4 – SM0363 (Output Shaft Assembly)
- 5 – SM0370 (1-3/8" Race)
- 6 – SM0371 (1-3/8" Bearing)
- 7 – SM0372 (Retaining Ring)
- 8 – SM0373 (1-3/8" Seal)
- 9 – SM0374 (Side Plug)
- 10 – SM0375A (Bottom Plug)
- 11 – SM0375B (Vent)
- 12 – F53/8x1-1/2SBC (Bolt)
- 13 – SM0376(End Cap)
- 14 – SM0134 (Complete Gear Box)
- 15 – SM0359 (Gear Oil) – 2 Qt's Required

Right Hand Spinner Gear Box



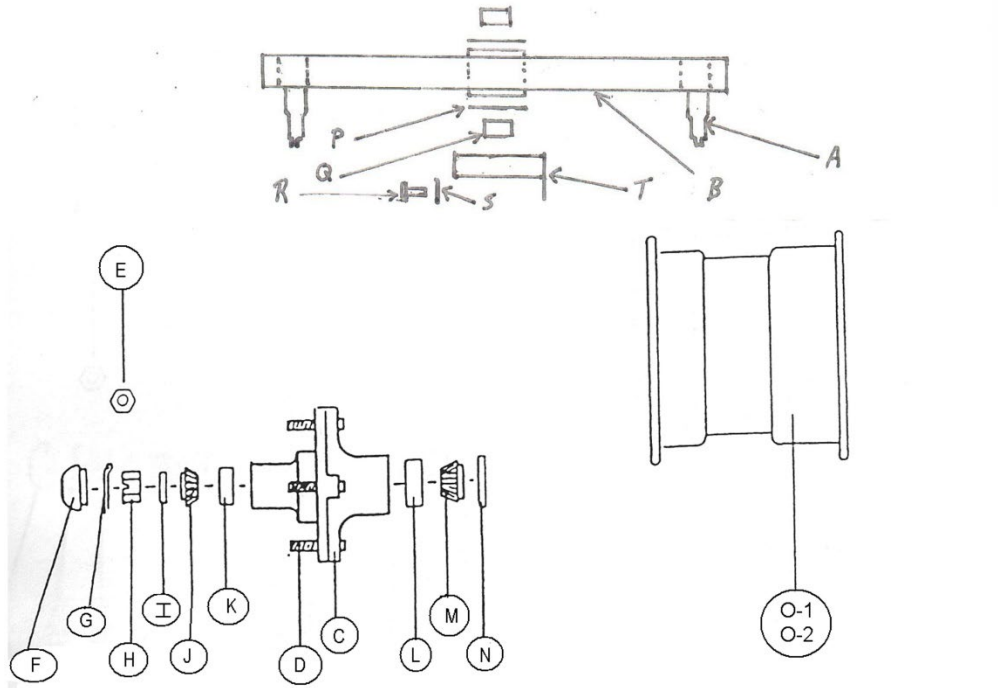
- 1 – SM0368 (Housing – Mach Tap 1/8 1/4)
- 2 – SM0369 (Housing – Mach Thru-STD)
- 3 – SM0364 (Input Shaft Assembly)
- 4 – SM0362 (Output Shaft Assembly)
- 5 – SM0370 (1-3/8" Race)
- 6 – SM0371 (1-3/8" Bearing)
- 7 – SM0372 (Retaining Ring)
- 8 – SM0373 (1-3/8" Seal)
- 9 – SM0374 (Plug)
- 10 – SM0375A (Plug)
- 11 – SM0375B (Vent)
- 12 – F53/8x1-1/2SBC (Bolt)
- 13 – SM0376 (End Cap)
- 14 – SM0135 (Complete Gear Box)
- 15 – SM0359 (Gear Oil) – 2 Qt's Required

Main Gear Box



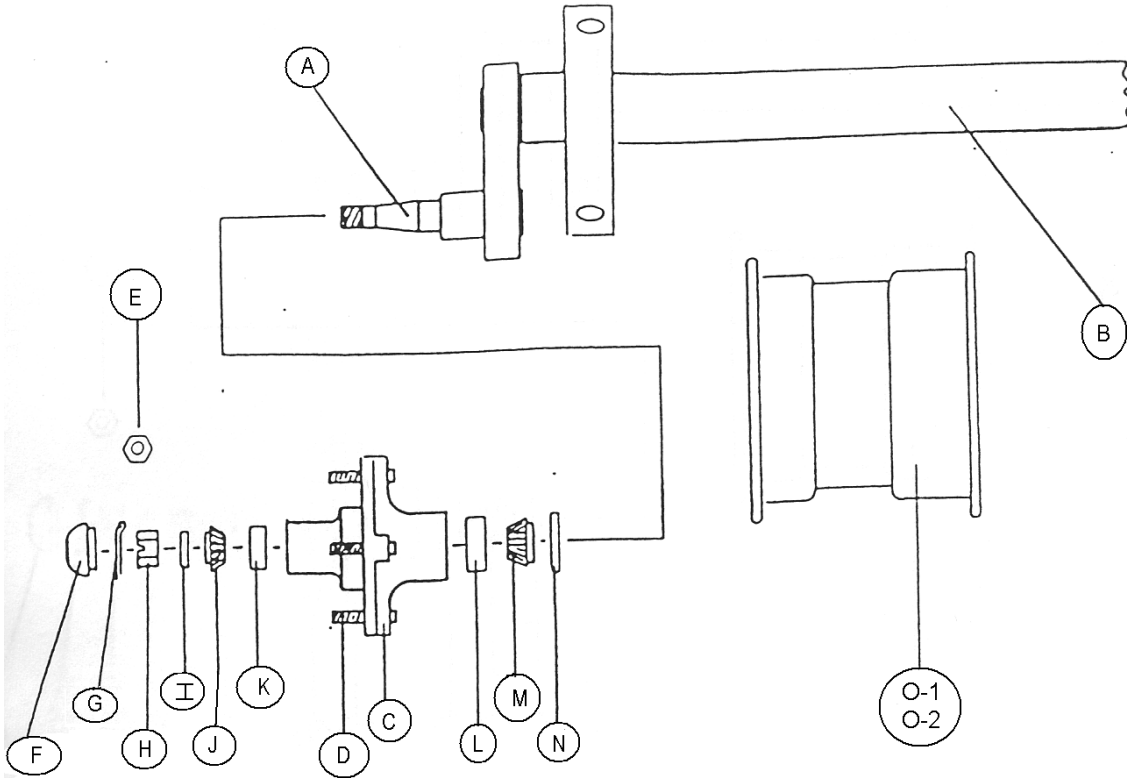
- | | |
|----------------------------------|--|
| 1 – SM0379 (1" Shaft) | 15 – KEY1/4 (Key) |
| 2 – SM0380 (2" Shaft) | 16 – KEY3/8 (Key) |
| 3 – SM0378 (Casting-STD) | 17 – SM0374 (Plug) |
| 4 – SM0377 (Casting-TAP) | 18 – SM0396 (Bushing) |
| 5 – SM0389 (Worm 50:1 LH) | 19 – SM0375 (Vent) |
| 6 – SM0355 (Bronze Gear 50:1 LH) | 20 – SM0387 (Seal) |
| 7 – SM0382 (1" Bearing) | 21 – F53/8x1-1/2SBC (Bolt) |
| 8 – SM0384 (1" Race) | 22 – F53/8x2-1/4SBC (Bolt) |
| 9 – SM0383 (2" Bearing) | 23 – SM0386 (Dust Cover Seal) |
| 10 – SM0385 (2" Race) | 24 – SM0388 (End Plug) |
| 11 – SM0391 (Retaining Ring) | 25 – SM0393 (End Cap) |
| 12 – SM0392 (Retaining Ring) | 26 – SM0131 (Complete Gear Box) |
| 13 – SM0395 (Seal) | 27 – SM0358 (Gear Oil) – 2 Qt's Required |
| 14 – SM0394 (Seal) | |

WALKING BEAM AXLE ASSEMBLY - 20,000 LB



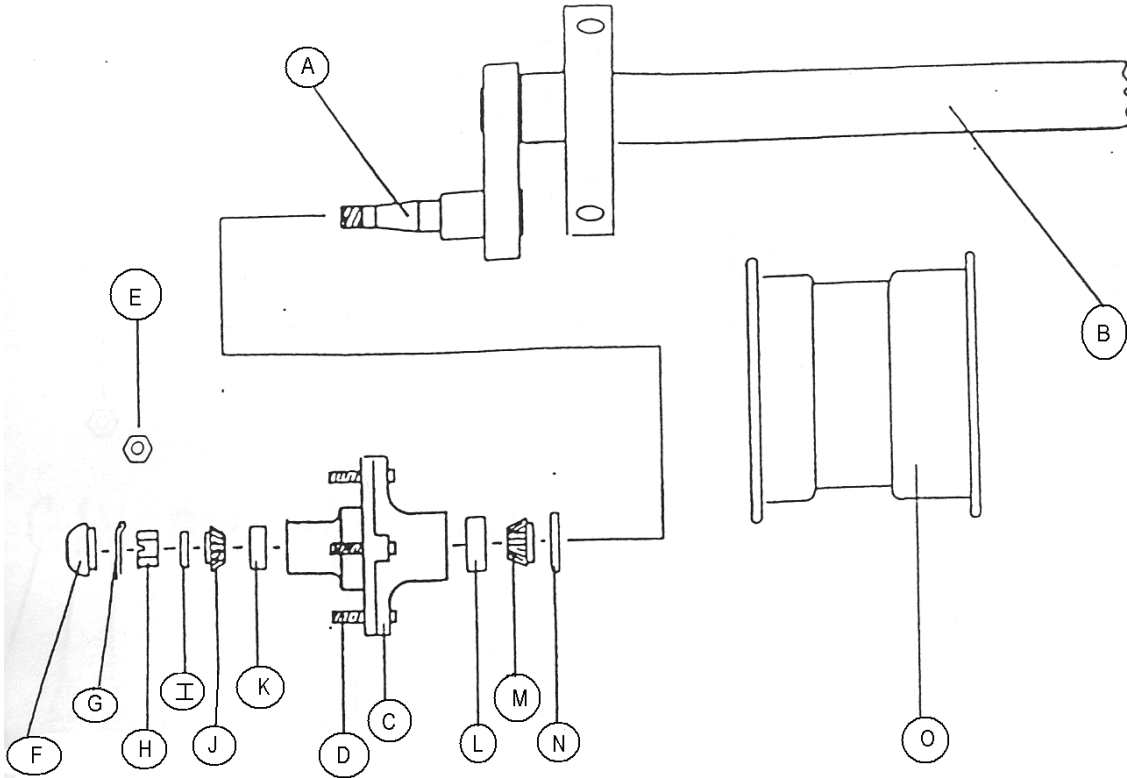
<u>LTR</u>	<u>QTY</u>	<u>DESCRIPTION</u>	<u>PART #</u>
A	2	Spindle	<u>SM0343</u>
B	1	Walking Beam Assembly	<u>SM0332A</u>
C	2	Hub	<u>SM0116</u>
D	16	Wheel Stud	<u>SM0115</u>
E	16	Wheel Nut	<u>SM0114</u>
F	2	Hub Dust Cap	<u>SM0113</u>
G	2	Cotter Pin	<u>SM0256</u>
H	2	Castle Nut	<u>SM0257</u>
I	2	Spindle Washer	<u>SM0208</u>
J	2	Outer Bearing	<u>SM0366</u>
K	2	Outer Race	<u>SM0367</u>
L	2	Inner Race	<u>SM0103</u>
M	2	Inner Bearing	<u>SM0102</u>
N	2	Oil Seal	<u>SM0117</u>
O-1	2	Rim, 8-Lug (16.5x16.1)	<u>SM0031</u>
O-2	2	Rim, 8-Lug (21.5x16.1)	<u>SM0146H</u>
Not Shown	2	16.5L X 16.1 Tire	<u>SM0017</u>
Not Shown	2	21.5L X 16.1 Tire	<u>SM0254</u>
P	2	UHMW Thrust Washer	<u>SM0334</u>
Q	2	Bronze Bushing	<u>SM0333</u>
R	1	7/8" x 1-3/4" Retaining Bolt	<u>SM0340A</u>
S	1	Retaining Washer	<u>SM0341</u>
T	1	Main Pin, 2-3/4"	<u>SM0340</u>

8x8 AXLE HUB WHEEL ASSEMBLY -10,000 LB



<u>LTR</u>	<u>QTY</u>	<u>DESCRIPTION</u>	<u>PART #</u>
A	2	Spindle	<u>SM0112</u>
B-1	1	Axle Assembly (Standard 54-1/2")	<u>SM0119</u>
B-2	1	Axle Assembly (Long 59-1/2")	<u>SM0119L</u>
C	2	Hub	<u>SM0116</u>
D	16	Wheel Stud	<u>SM0115</u>
E	16	Wheel Nut	<u>SM0114</u>
F	2	Hub Dust Cap	<u>SM0113</u>
G	2	Cotter Pin	<u>SM0256</u>
H	2	Castle Nut	<u>SM0257</u>
I	2	Spindle Washer	<u>SM0208</u>
J	2	Outer Bearing	<u>SM0366</u>
K	2	Outer Race	<u>SM0367</u>
L	2	Inner Race	<u>SM0103</u>
M	2	Inner Bearing	<u>SM0102</u>
N	2	Oil Seal	<u>SM0117</u>
O-1	2	Rim, 8-Lug (16.5x16.1)	<u>SM0031</u>
O-2	2	Rim, 8-Lug (21.5x16.1)	<u>SM0146H</u>
Not Shown	2	16.5L X 16.1 Tire	<u>SM0017</u>
Not Shown	2	21.5L X 16.1 Tire	<u>SM0254</u>

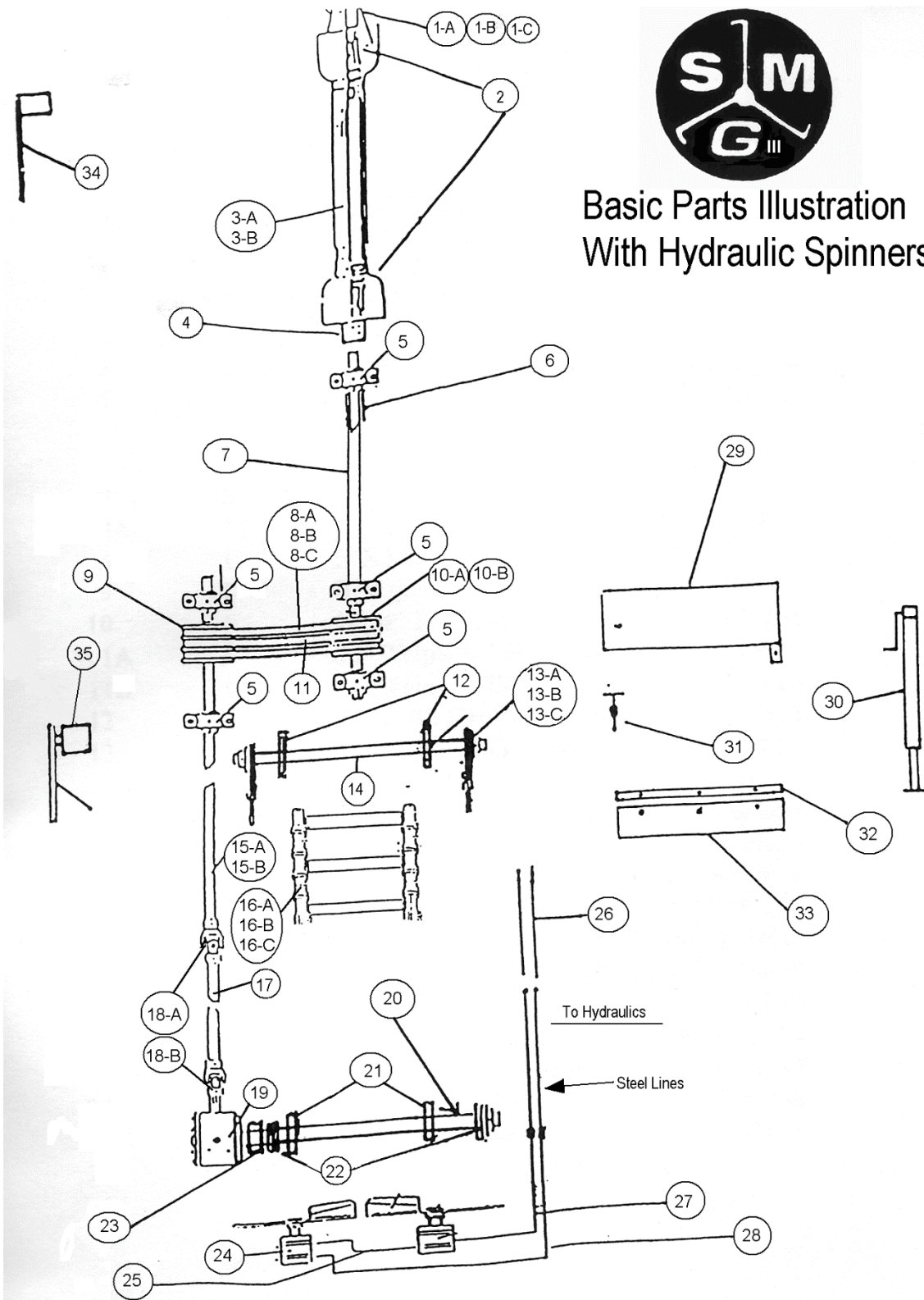
6x6 AXLE HUB WHEEL ASSEMBLY -6,500 LBS



<u>LTR</u>	<u>QTY</u>	<u>DESCRIPTION</u>	<u>PART #</u>
A	2	Spindle	<u>SM0095</u>
B	1	Axle Assembly	<u>SM0120</u>
C	2	Hub	<u>SM0099</u>
D	12	Wheel Stud	<u>SM0098</u>
E	12	Wheel Nut	<u>SM0097</u>
F	2	Hub Dust Cap	<u>SM0096</u>
G	2	Cotter Pin	<u>SM0256</u>
H	2	Castle Nut	<u>SM0095B</u>
I	2	Spindle Washer	<u>SM0095A</u>
J	2	Outer Bearing	<u>SM0106</u>
K	2	Outer Race	<u>SM0105</u>
L	2	Inner Race	<u>SM0100</u>
M	2	Inner Bearing	<u>SM0101</u>
N	2	Oil Seal	<u>SM0104</u>
O	2	Wheel, 6-Lug	<u>SM0030</u>
Not Shown	2	14L X 16.1 Tire	<u>SM0016</u>



Basic Parts Illustration With Hydraulic Spinners



HYDRAULIC BASIC PARTS LIST

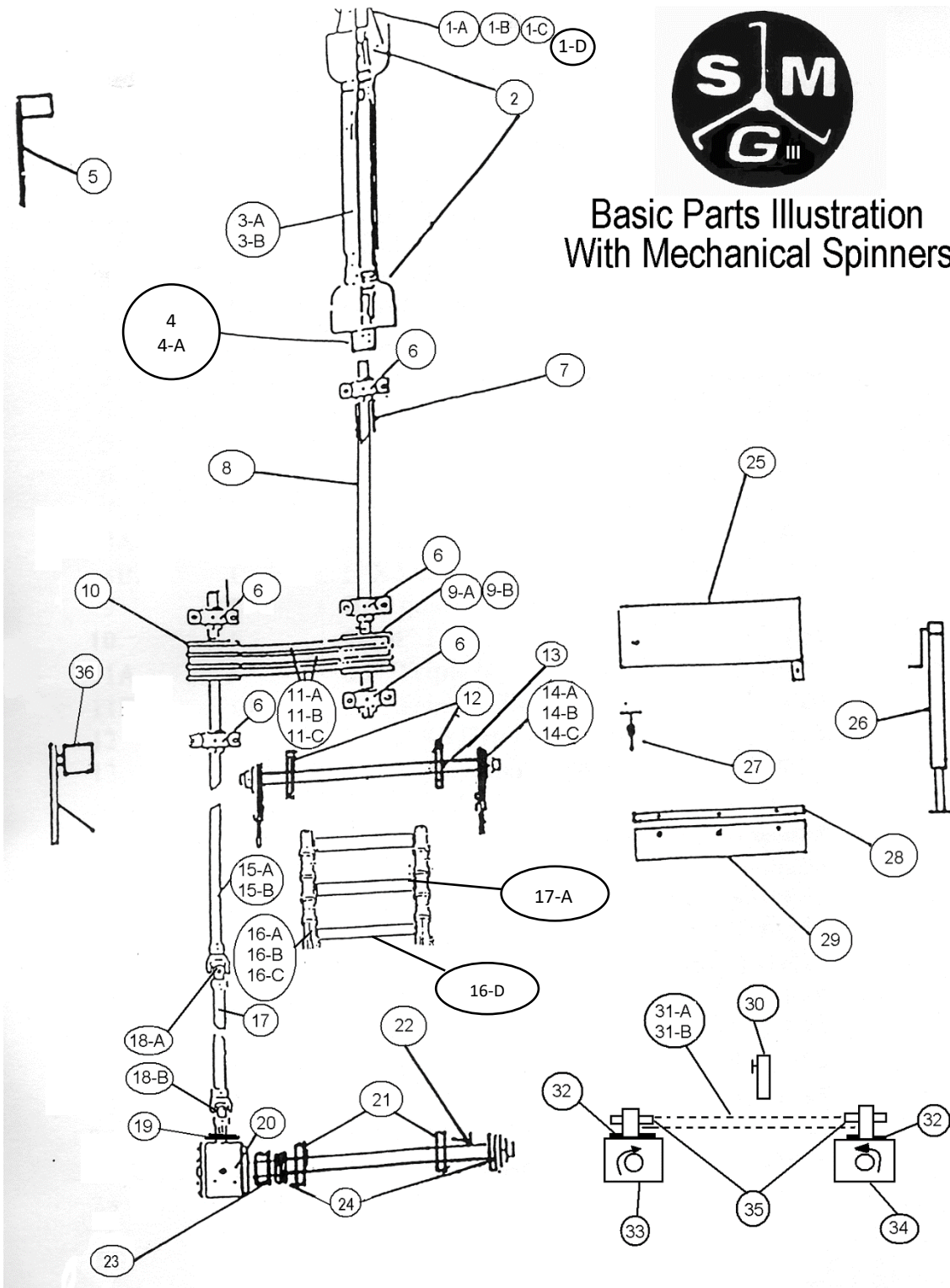
<u>NO.</u>	<u>QTY.</u>	<u>PART DESCRIPTION</u>	<u>PART #</u>
1A	1	Yoke, 6-Spline (540-RPM)	<u>SM0224</u>
1B	1	Yoke, 21-Spline, 1-3/8" (1000-RPM)	<u>SM0127</u>
1C	1	Yoke, 20-Spline, 1-3/4" (1000-RPM)	<u>SM0278</u>
2	2	U-Joint, Driveshaft	<u>SM0047</u>
3-A	1	PTO Shaft Complete (540-RPM)	<u>SM0051</u>
3-B	1	PTO Shaft Complete (BIG 1000)	<u>SM0052L</u>
3-C	1	PTO Shaft Complete (1000-RPM)	<u>SM0052</u>
3-D	1	Driveshaft, Rear Half	<u>SM0044</u>
3-E	1	Driveshaft, Front half (540-RPM)	<u>SM0050</u>
3-F	1	Driveshaft, Front Half (1000-RPM)	<u>SM0053</u>
3-G	1	Driveshaft, Front Half (BIG 1000)	<u>SM0054</u>
4	1	Yoke, Driveshaft	<u>SM0048</u>
5	6	Pillow Block Bearing, 1-1/4"	<u>SM0122</u>
6	1	Front Driveshaft Cover	<u>SM0265</u>
7	1	Front Driveshaft, 1-1/4" x 71-1/2"	<u>SM0012</u>
8-A	1	Belt, 83" (540-RPM)	<u>SM0215</u>
8-C	1	Belt, 74" (1000-RPM)	<u>SM0137</u>
9	1	3-Groove Pulley, 7-3/4"	<u>SM0213</u>
10-A	1	3-Groove Pulley, 11" (540-RPM)	<u>SM0068</u>
10-B	1	3-Groove Pulley, 6" (1000-RPM)	<u>SM0091</u>
11	1	Idler Bracket	<u>SM0035</u>
12	2	Sprocket, Front Conveyor, 1-1/2"	<u>SM0021</u>
13-A	2	Chain Tightening Bracket	<u>SM0059</u>
13-B	2	Chain Tightening Bolt (S/S)	<u>SM0060</u>
13-C	2	Chain Tightening Spring	<u>SM0061</u>
13-D	2	Chain Tightening Bearing	<u>SM0070</u>
14	1	Conveyor Shaft, 1-1/2" x 40"	<u>SM0008</u>
15-A	1	PTO Drive Shaft, 1-1/4" x 161.5"	<u>SM0041</u>
15-B	1	PTO Drive Shaft, 1-1/4" x 210"	<u>SM0042</u>
15-C	1	PTO Drive Shaft, 1-1/4" x 233"	<u>SM0042L</u>
16-A	1	Floor Chain, 16' (HD Combo)	<u>SM0013H</u>
16-B	1	Floor Chain, 20' (HD Combo)	<u>SM0014H</u>
16-C	1	Floor Chain, 22' (HD Combo)	<u>SM0349H</u>
17	1	Drive Shaft, 1-1/4" x 16-1/2"	<u>SM0015</u>

HYDRAULIC BASIC PARTS LIST-CONTINUED

<u>NO.</u>	<u>QTY.</u>	<u>PART DESCRIPTION</u>	<u>PART #</u>
18-A	1	U-Joint Assembly, 1-1/4" x 1-1/4"	<u>SM0069</u>
18-B	1	U-Joint Assembly, 1-1/4" x 1"	<u>SM0238</u>
19	1	Conveyor Gear Box, Main	<u>SM0131</u>
20	1	Rear Conveyor Shaft, 2" x 42"	<u>SM0036</u>
21	1	Sprocket, Rear Conveyor, 2"	<u>SM0022</u>
22	2	4-Bolt Flange Bearing, 2"	<u>SM0123</u>
23	1	Shaft Coupling Complete, 2"	<u>SM0236</u>
24	2	Hydraulic Spinner Motor	<u>SM0086</u>
25	1	Hydraulic Hose, 1/2" x 30"	<u>SM0275</u>
26	2	Hydraulic Hose, 1/2" x 96"	<u>SM0269</u>
27	1	Hydraulic Hose, 1/2" x 48"	<u>SM0274</u>
28	1	Hydraulic Hose, 1/2" x 68"	<u>SM0276</u>
29	1	Belt Guard	<u>SM0027</u>
30	1	Tongue Jack	<u>SM0210</u>
31	1	Rubber Latch	<u>SM0235</u>
32	1	Conveyor Bar	<u>SM0046</u>
33	1	Rubber Conveyor Seal	<u>SM0045</u>
34	1	PTO Shaft Holder	<u>SM0263</u>
35	1	3-Groove Idler Pulley	<u>SM0093</u>
36	1	Yoke, 1-inch	<u>SM0049</u>



Basic Parts Illustration With Mechanical Spinners



ALL MECHANICAL BASIC PARTS LIST

<u>NO.</u>	<u>QTY.</u>	<u>PART DESCRIPTION</u>	<u>PART #</u>
1-D	1	U-Joint, 1-3/4" Yoke	<u>NE2-2275</u>
1-A	1	Yoke, 6-Spline (540-RPM)	<u>NE20-9309</u>
1-B	1	Yoke, 21-Spline, 1-3/8" (1000-RPM)	<u>NE20-9325</u>
1-C	1	Yoke, 20-Spline, 1-3/4" (1000-RPM)	<u>NE22-1319</u>
2	2	U-Joint, Driveshaft	<u>NE1-2075</u>
3-A	1	PTO Shaft Complete (540-RPM)	<u>SM0051</u>
3-B	1	PTO Shaft Complete (BIG 1000)	<u>SM0052L</u>
3-C	1	PTO Shaft Complete (1000-RPM)	<u>SM0052</u>
3-D	1	Driveshaft, Rear Half	<u>SM0044</u>
3-E	1	Driveshaft, Front half (540-RPM)	<u>SM0050</u>
3-F	1	Driveshaft, Front Half (1000-RPM)	<u>SM0053</u>
3-G	1	Driveshaft, Front Half (BIG 1000)	<u>SM0054</u>
4	1	Yoke, Driveshaft Standard	<u>SM0048</u>
4-A	1	Yoke, Big Driveshaft	<u>NE22-1344</u>
5	1	PTO Shaft Holder	<u>SM0263</u>
6	6	Pillow Block Bearing, 1-1/4"	<u>SM0122</u>
7	1	Front Driveshaft Cover	<u>SM0265</u>
8	1	Front Driveshaft, 1-1/4" x 71-1/2"	<u>SM0012</u>
9-A	1	3-Groove Pulley, 11" (540-RPM)	<u>SM0068</u>
9-B	1	3-Groove Pulley, 6" (1000-RPM)	<u>SM0091</u>
10	1	3-Groove Pulley, 7-3/4"	<u>SM0213</u>
11-A	1	Belt, 83" (540-RPM)	<u>SM0215</u>
11-C	1	Belt, 74" (1000-RPM)	<u>SM0137</u>
12	2	Sprocket, Front Conveyor, 1-1/2"	<u>SM0021</u>
13	1	Conveyor Shaft, 1-1/2" x 40"	<u>SM0008</u>
14-A	2	Chain Tightening Bracket	<u>SM0059</u>
14-B	2	Chain Tightening Bolt (S/S)	<u>SM0060</u>
14-C	2	Chain Tightening Spring	<u>SM0061</u>
14-D	2	Chain Tightening Bearing	<u>SM0070</u>
15-A	1	PTO Drive Shaft, 1-1/4" x 161.5"	<u>SM0041</u>
15-B	1	PTO Drive Shaft, 1-1/4" x 210"	<u>SM0042</u>
15-C	1	PTO Drive Shaft, 1-1/4" x 233"	<u>SM0042L</u>
16-A	1	Floor Chain, 16' (HD Combo)	<u>SM0013H</u>
16-B	1	Floor Chain, 20' (HD Combo)	<u>SM0014H</u>
16-D		Drag Chain Bar	<u>SM0080</u>
	1	Receiver Hitch	<u>SM0216</u>
	1	Standard Hitch	<u>SM0217</u>
	1	Pintle Hitch	<u>SM0218</u>
17-A		667X Connecting Link	<u>SM0058</u>

Parts Not
Shown in
Illustration

ALL MECHANICAL BASIC PARTS LIST-CONTINUED

<u>NO.</u>	<u>QTY.</u>	<u>PART DESCRIPTION</u>	<u>PART #</u>
16-C	1	Floor Chain, 22' (HD Combo)	<u>SM0349H</u>
17	1	Drive Shaft, 1-1/4" x 17"	<u>SM0015</u>
18-A	1	U-Joint Assembly, 1-1/4" x 1-1/4"	<u>SM0069</u>
18-B	1	U-Joint Assembly, 1-1/4" x 1"	<u>SM0238</u>
19	1	Sprocket, Main Drive	<u>SM0212</u>
20	1	Conveyor Gear Box, Main	<u>SM0131</u>
21	1	Sprocket, Rear Conveyor, 2"	<u>SM0022</u>
22	1	Rear Conveyor Shaft, 2" x 42"	<u>SM0036</u>
23	1	Yoke, 1" Driveshaft	<u>SM0049</u>
23	1	Shaft Coupling Complete, 2"	<u>SM0236</u>
23-A	2	Sprocket 60x20x2	<u>SM0009</u>
24-B	1	Double Chain 60	<u>SM0239</u>
24	2	4-Bolt Flange Bearing, 2"	<u>SM0123</u>
25	1	Belt Guard	<u>SM0027</u>
26	1	Tongue Jack	<u>SM0210</u>
27	1	Rubber Latch	<u>SM0235</u>
28	1	Seal Retainer	<u>SM0046</u>
29	1	Rubber Conveyor Seal	<u>SM0045</u>
30	2	Sprocket, Idler	<u>SM0067</u>
31-A	1	Chain, Gearbox to Gearbox	<u>SM0144</u>
31-B	1	Chain, Main to Spinner	<u>SM0147</u>
32	2	4-Bolt Flange Bearing, 1-3/8"	<u>SM0121</u>
33	1	Left Hand Spinner Gear Box	<u>SM0134</u>
34	1	Right Hand Spinner Gear Box	<u>SM0135</u>
35	3	Sprocket, Drive 20T X 1-3/8"	<u>SM0064</u>
36	1	Idler Bracket	<u>SM0035</u>
37	1	Yoke, 1" Driveshaft	<u>SM0049</u>
38	1	3-Groove Idler Pulley	<u>SM0093</u>

PARTS NOT SHOWN IN ILLUSTRATIONS

<u>QTY.</u>	<u>PART DESCRIPTION</u>	<u>PART #</u>
2	Decal - Spreadmaster (Yellow)	<u>SM0317</u>
2	Decal - Spreadmaster (White)	<u>SM0318</u>
45 Feet	Decal - Pinstripe 1" (Yellow)	<u>SM0319</u>
45 Feet	Decal - Pinstripe 1" (White)	<u>SM0320</u>
3	Decal - Keep Guards in Place	<u>SM0179</u>
2	Decal - Keep Hands Clear	<u>SM0180</u>
1	Decal - Door Height Gauge (Yellow)	<u>SM0301</u>
1	Decal - Door Height Gauge (White)	<u>SM0302</u>
1	Decal - Slow Moving Vehicle	<u>SM0181</u>
6	Decal - Grease Daily	<u>SM0182</u>
2	* Decal - Spreader Number (Yellow)	<u>SM0327</u>
2	* Decal - Spreader Number (White)	<u>SM0328</u>
2	Decal - SMW (Yellow)	<u>SM0304</u>
2	Decal - SMW (White)	<u>SM0303</u>
1	Spray Paint (Green)	<u>SM0188</u>
6 Gallons	Paint (Green)	<u>SM0185</u>
6 Gallons	Paint (IH Red)	<u>SM0187</u>
5 Gallons	Primer, Industrial Grey	<u>SM0186</u>
2	Paint Hardener	<u>SM0223</u>
1	PTO Shaft Cover UHMW	<u>SM0204</u>
2	34" x 120" x 1/2" Sheet	<u>SM0200</u>
1	Floor Chain, 16' (Bar.Bro/Chand)	<u>SM0173H</u>
1	Floor Chain, 18' (Bar.Bro/Chand)	<u>SM0003H</u>
1	Floor Chain, 20' (Bar.Bro/Chand)	<u>SM0174H</u>
1	Floor Chain, 22' (Bar.Bro/Chand)	<u>SM0165H</u>
1	Divider, 16' (Lime)	<u>SM0039</u>
1	Divider, 20' (Lime)	<u>SM0040</u>
1	Divider, 22' (Lime)	<u>SM0040L</u>
10 Ft. Coil	Chain, 667 Pintle	<u>SM0055</u>

(*) Allow a week when ordering replacement numbers

PARTS NOT SHOWN IN ILLUSTRATIONS
CONTINUED

<u>QTY.</u>	<u>PART DESCRIPTION</u>	<u>PART #</u>
3	8-18 Spur Gear (Door)	<u>SM0118</u>
2	Spur Gear Rack (Door)	<u>SM0142</u>
1	Collar, 1-1/4" Shaft	<u>SM0159</u>
2	Grease Fitting, 1/4"	<u>SM0222</u>
2	Stud, Universal	<u>SM0160</u>
24	Bolt, 1/4" x 3/4"	<u>SM0400</u>
18	Bolt, 1/4" x 1-1/4" (S/S)	<u>SM0346</u>
18	Nut, 1/4" (S/S)	<u>SM0225</u>
18	Lock Nut, 1/4"	<u>SM0197</u>
18	Flat Washer, 1/4" (S/S)	<u>SM0258</u>
18	Lock Washer, 1/4" (S/S)	<u>SM0227</u>
2	Bolt, 5/16" x 1"	<u>SM0220</u>
4	Bolt, 5/16" x 1-1/4"	<u>SM0172</u>
4	Lock Nut, 5/16"	<u>SM0353</u>
2	Flat Washer, 5/16"	<u>SM0221</u>
5	Set Screw, 3/8" x 3/4" (Square Head)	<u>SM0231</u>
4	Set Screw, 3/8" x 3/4"	<u>SM0233</u>
4	Set Screw, 3/8" x 1" (Square Head)	<u>SM0193</u>
2	Set Screw, 3/8" x 1"	<u>SM0232</u>
2	Bolt, 3/8" x 1-1/4"	<u>SM0168</u>
1	Bolt, 3/8" x 2"	<u>SM0354</u>
13	Lock Nut, 3/8"	<u>SM0166</u>
10	Jam Nut, 3/8"	<u>SM0194</u>
13	Flat Washer, 3/8"	<u>SM0167</u>
30	Bolt, 1/2" x 1-3/4"	<u>SM0170</u>
4	Hex Nut, 1/2"	<u>SM0150</u>
26	Lock Nut, 1/2"	<u>SM0151</u>
28	Flat Washer, 1/2"	<u>SM0149</u>
14	Lock Washer, 1/2"	<u>SM0152</u>
1	Hitch Clevis Bolt On	<u>SM0217</u>
2	Receiver Bolt 7/8 x 7-1/2 (Hitch)	<u>SM0219</u>

2

7/8 Nut (Hitch)

F57/8NC

* Note: All hardware is Grade 5 unless otherwise specified.

Please contact us for your parts and service after the sale. We stock ALL parts for Spreadmaster ALL the time. Our Quality Service doesn't stop when the deal is done.



SMW SALES LLC
11432 TRUSSUM POND ROAD
LAUREL, DE 19956
PHONE: (302) 875-7958
WEB: <https://smwsales.com>